

# I-84 Danbury Project

## Project Advisory Committee (PAC) Meeting No. 14

August 9, 2023



An aerial photograph of a city, likely Salt Lake City, showing a multi-lane highway with traffic. The image is overlaid with a semi-transparent blue filter. The text "Welcome / Providing Feedback" is centered in white.

# Welcome / Providing Feedback

# Housekeeping Items

- Meeting is recorded and will be posted on website
- Presentation is posted to project website at [http://www.i84danbury.com/course\\_cat/public-advisory-committee/](http://www.i84danbury.com/course_cat/public-advisory-committee/)
- Participants can video conference in or call in via phone
- Two ways to communicate during discussion periods:
  - Raise your hand to verbally state question / comment
  - Type question / comment into the chat to be read and answered aloud by study team



# CTDOT Team



**Nilesh Patel**  
Principal Engineer



**Kevin Burnham**  
Project Manager



**Krishalyn Macrohon**  
Project Engineer

## Consultant Team



**Sharat K. Kalluri**  
Project Manager



**Jeanine Armstrong Gouin**  
Environmental Documentation



**Rick Black**  
Environmental Documentation



**Marcy Miller**  
Community Engagement



# Agenda

- PAC Update
- Potential Early Action / Breakout projects
- Next Steps
- Discussion / Questions



# PAC Update

# Since Our Last Meeting

- Identified Reasonable Range of Alternatives
- Posted all concepts to website
- Continued to update social media
- Reviewed potential breakout projects
- Preparing Draft PEL Report



[www.i84danbury.com](http://www.i84danbury.com)



I-84 Danbury Project



@i84danbury





# Potential Early Action / Breakout Projects



# Potential Breakout Projects

- Transportation Systems Management and Operations (TSMO) - Dynamic Lane Use (DLU)
- Intersection improvement at Main St and Downs St
- Interchange 8 improvements – US Route 6 / Newtown Rd

An aerial photograph of a multi-lane highway interchange, overlaid with a semi-transparent blue filter. The highway curves through a suburban residential area with houses and trees. The text 'TSMO – Dynamic Lane Use' is centered in white, bold font.

# TSMO – Dynamic Lane Use

# What is TSMO?

- A set of **multimodal** strategies which can help maximize use of **existing and planned** transportation infrastructure

Source: Federal Highway Administration



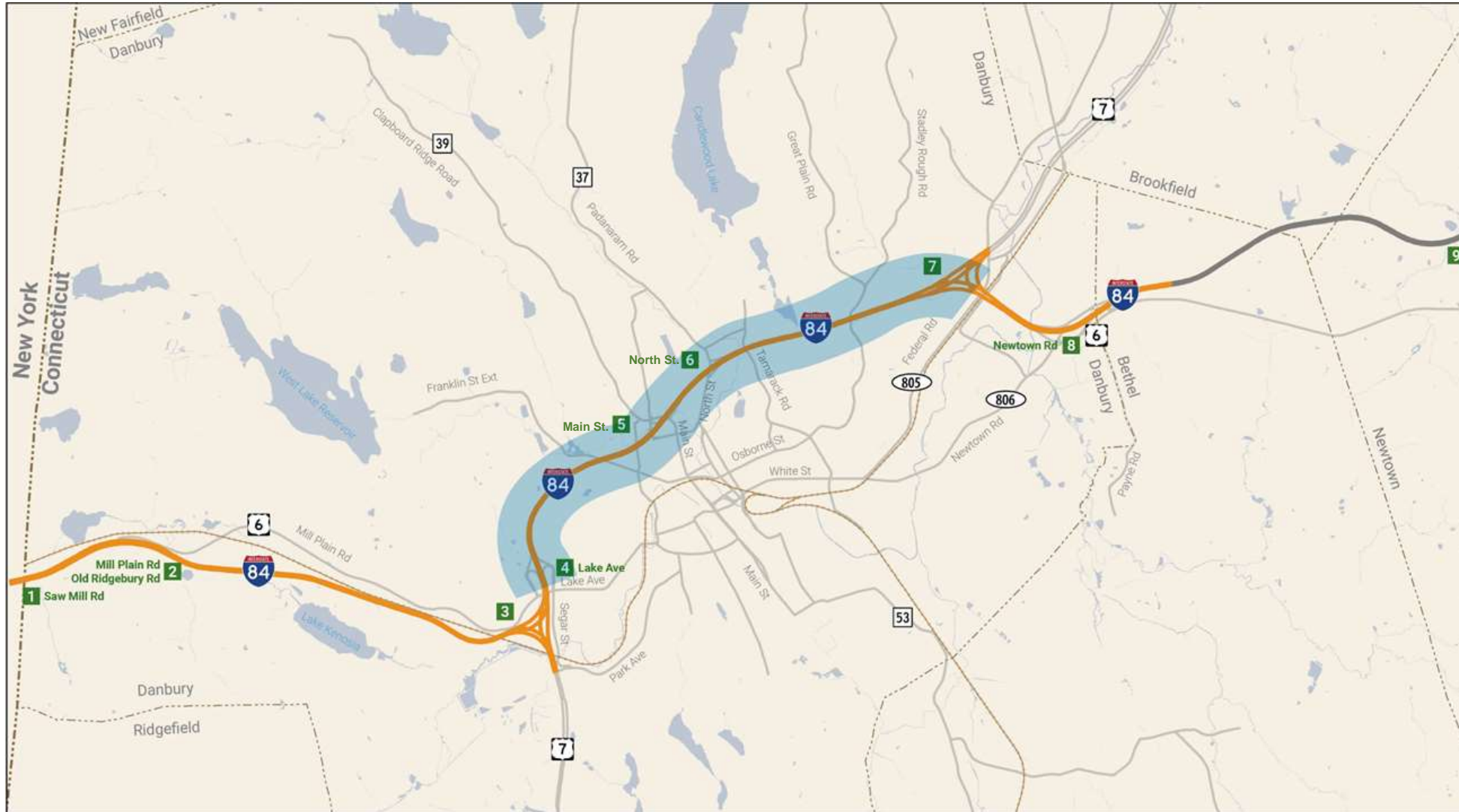
Image Source: roadsbridges.com; John Hibbard, GDOT

# What is Dynamic Lane Use?

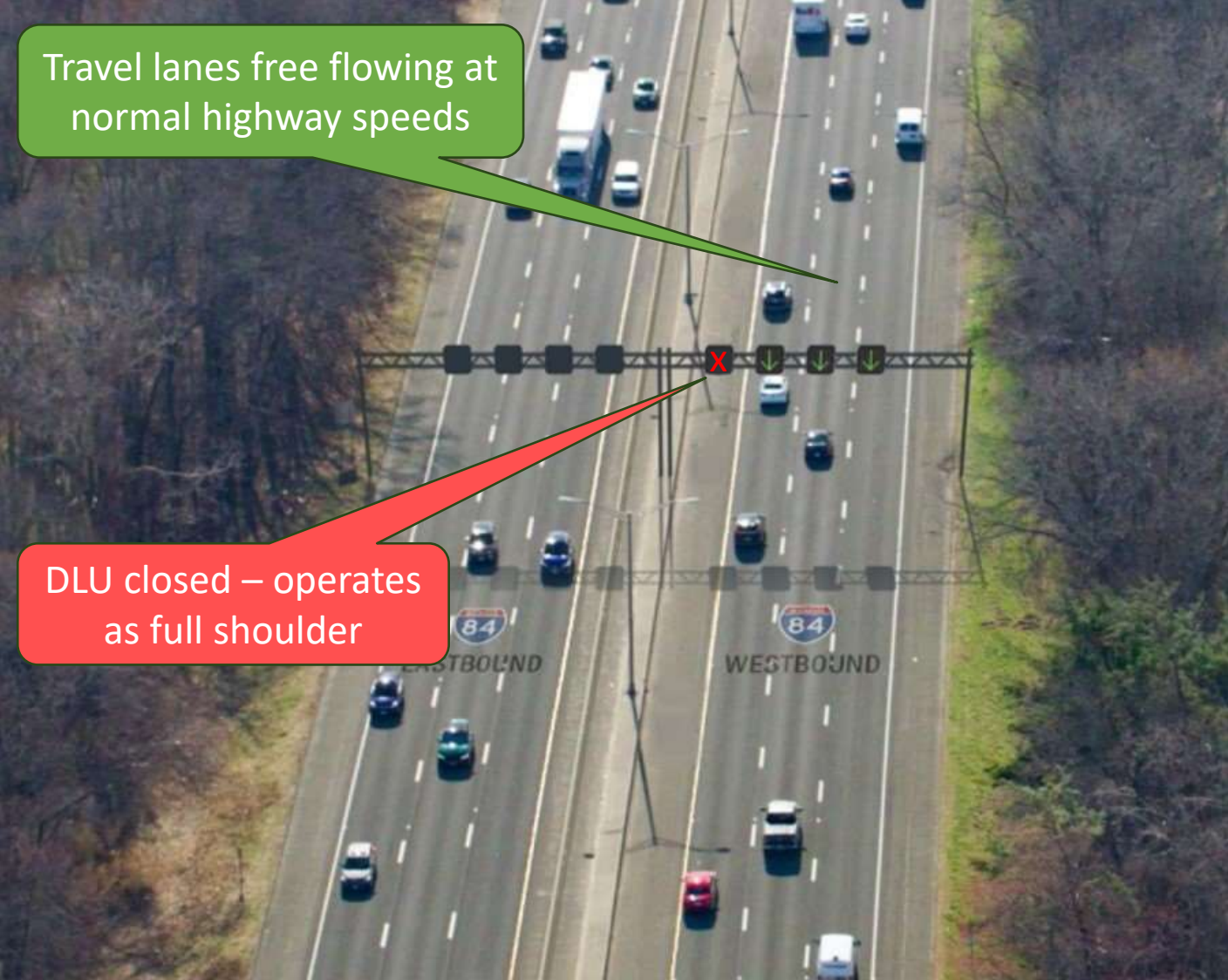
- A TSMO strategy which opens or closes a travel lane based on traffic conditions on the highway.



# Dynamic Lane Use Project Limits



# Dynamic Lane Use: Operation

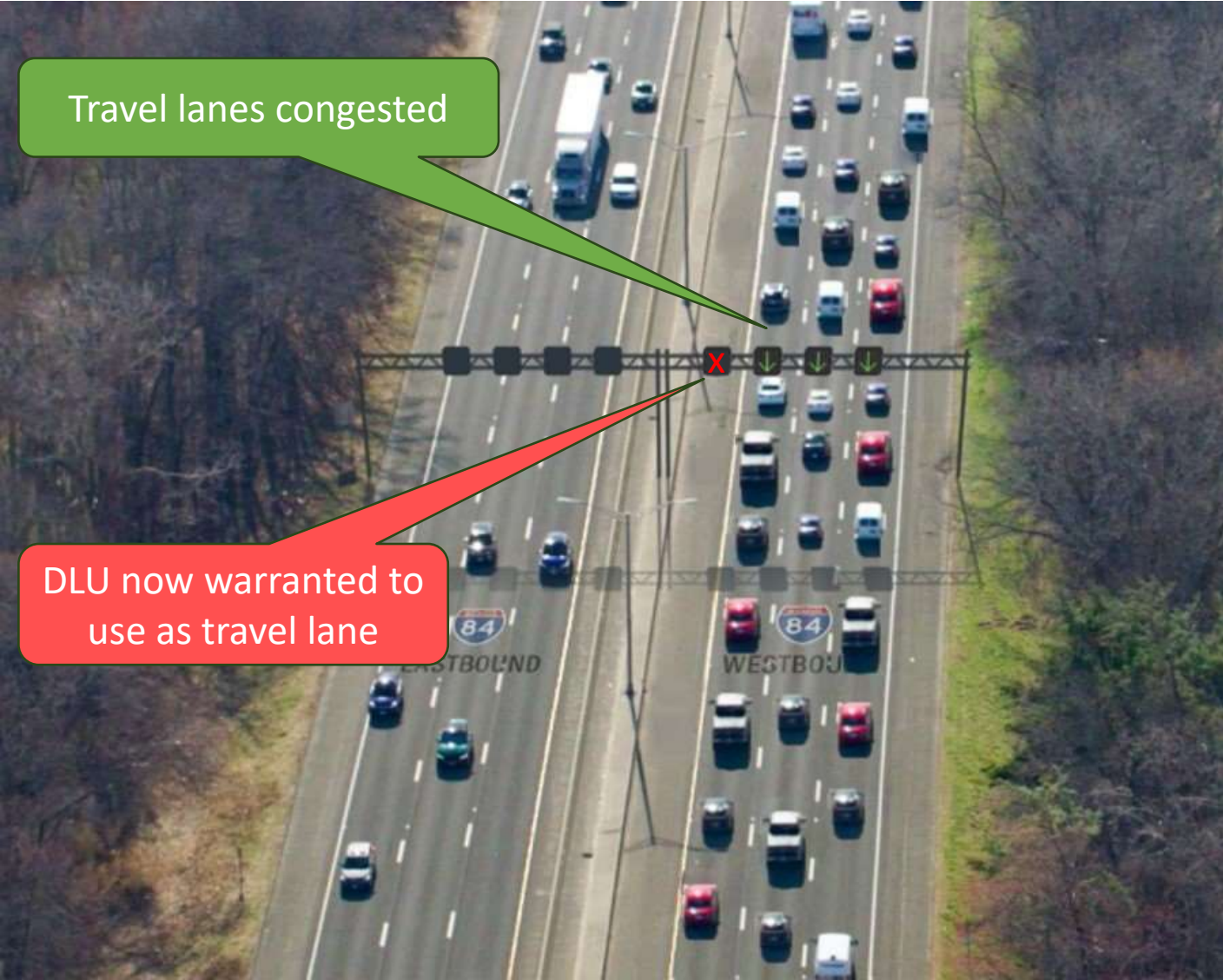


Travel lanes free flowing at normal highway speeds

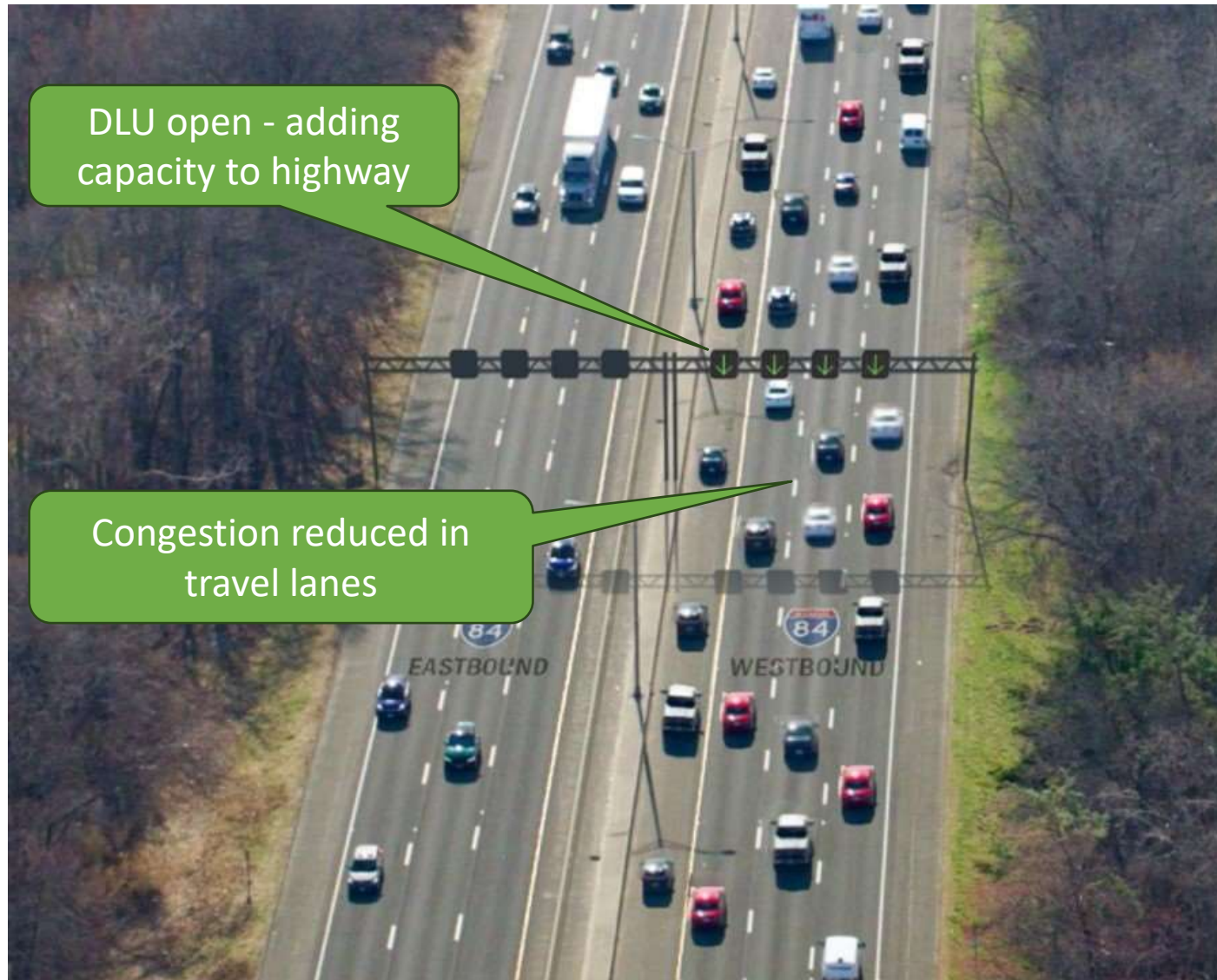
DLU closed – operates as full shoulder



# Dynamic Lane Use: Operation



# Dynamic Lane Use: Operation





# Michigan Flex Lane Operation



**Green Arrow:** Shoulder is open and Flex Route is available as a third lane.

# Michigan Flex Lane Operation



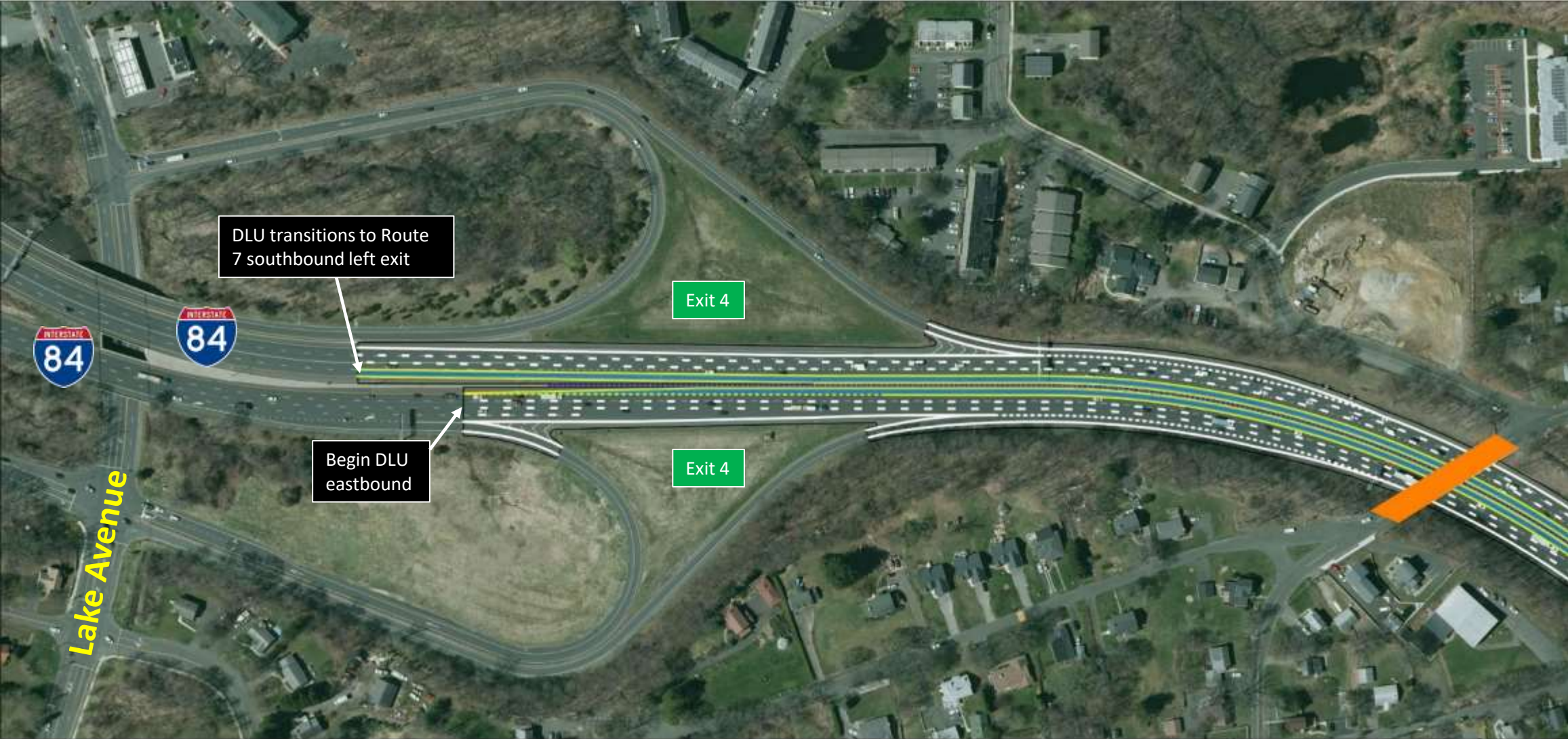
Speed is continuously monitored for traffic slowdowns.

# Michigan Flex Lane Operation

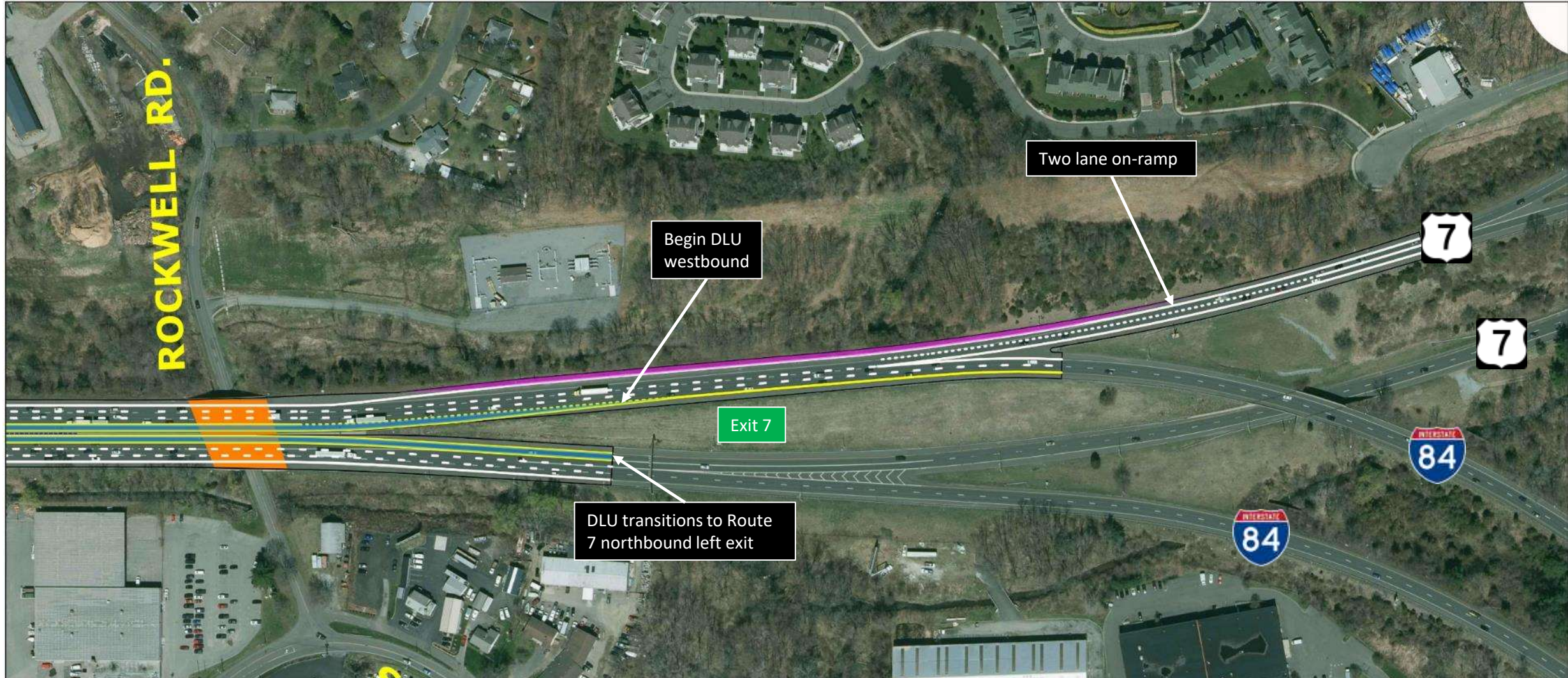


**Red X:** Shoulder is closed and Flex Route is not to be used.

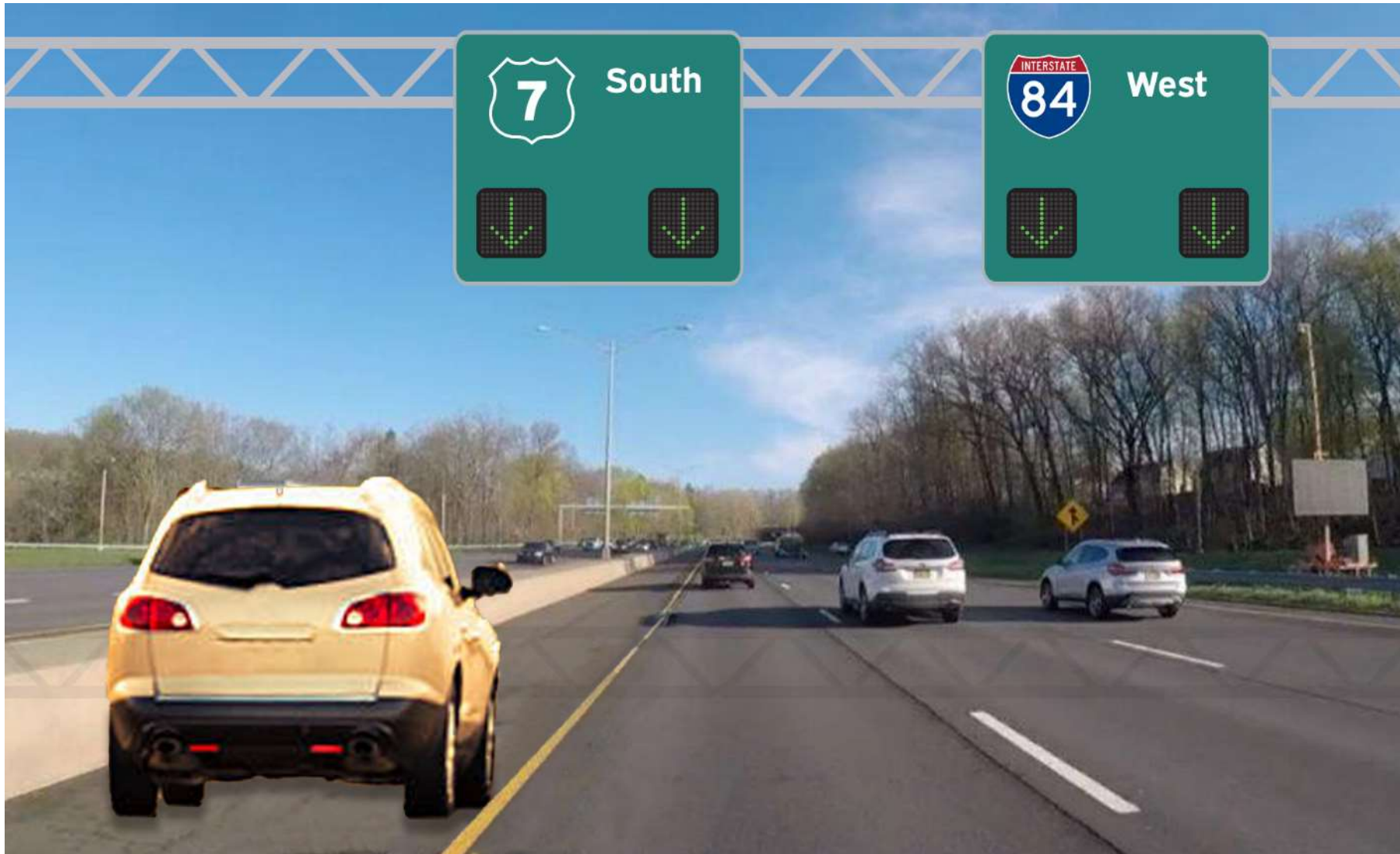
# Dynamic Lane Use: West End



# Dynamic Lane Use: East End

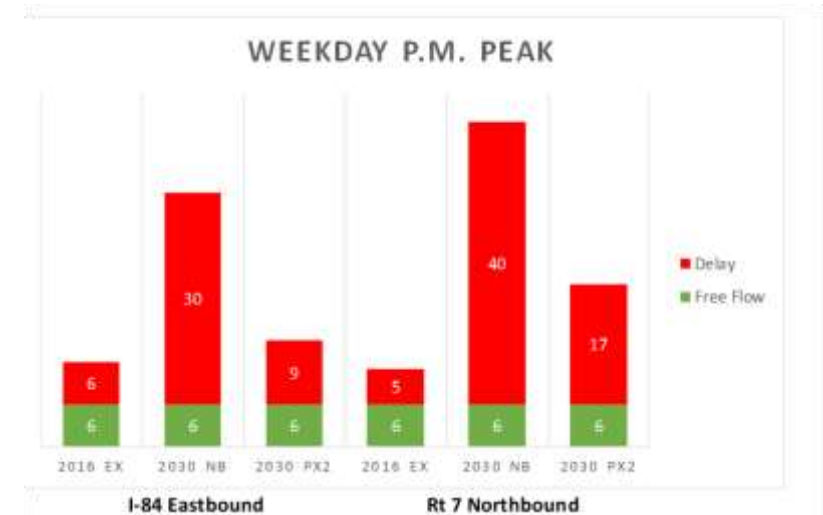
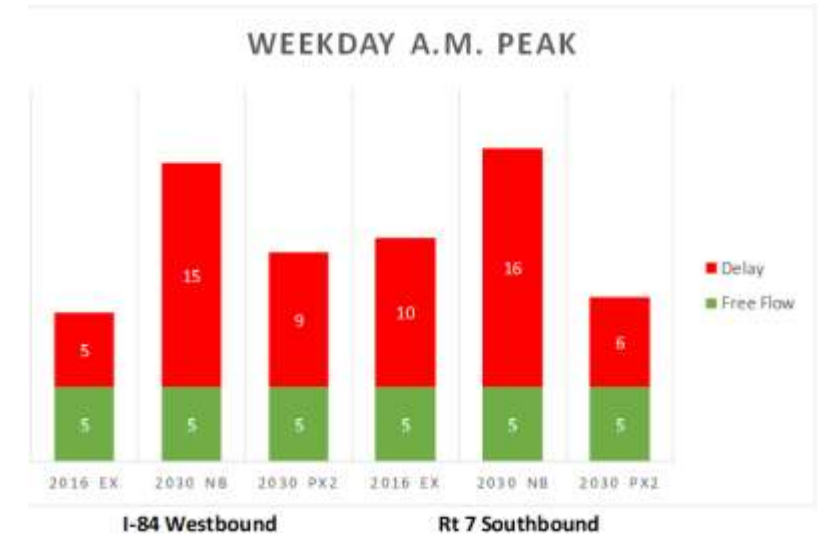


# Dynamic Lane Use: Driver's Perspective



# Benefits

- + Peak hour delay is reduced
- + Some states have seen safety benefits
- + Constructed within existing ROW
- + Limited impacts
- + Implementation in short timeframe



# DLU Next Steps

- Coordination with Federal Highway Administration
- Coordination with emergency services
- Coordination with community and stakeholders
- Environmental Review/Design commencing in 2023
- Anticipated construction completion in 2027-2028





An aerial photograph of a city, likely in the Northeastern United States, featuring a prominent multi-lane highway interchange. The image is overlaid with a semi-transparent blue filter. The word "Questions" is centered in the image in a large, white, sans-serif font.

# Questions

An aerial photograph of a city street intersection, overlaid with a semi-transparent blue filter. The main road is a multi-lane highway that curves through the center of the frame. Several cars are visible on the road. To the right, a smaller road branches off. The surrounding area is densely populated with residential houses and trees. In the background, a large, modern building with a curved facade is visible. The overall scene is captured from a high angle, providing a clear view of the urban layout.

# Main St, North St, and Downs St

# Main St, North St, and Downs St

- Poor traffic operations
- Poor sight lines on Main St from north
- Crashes caused by congestion



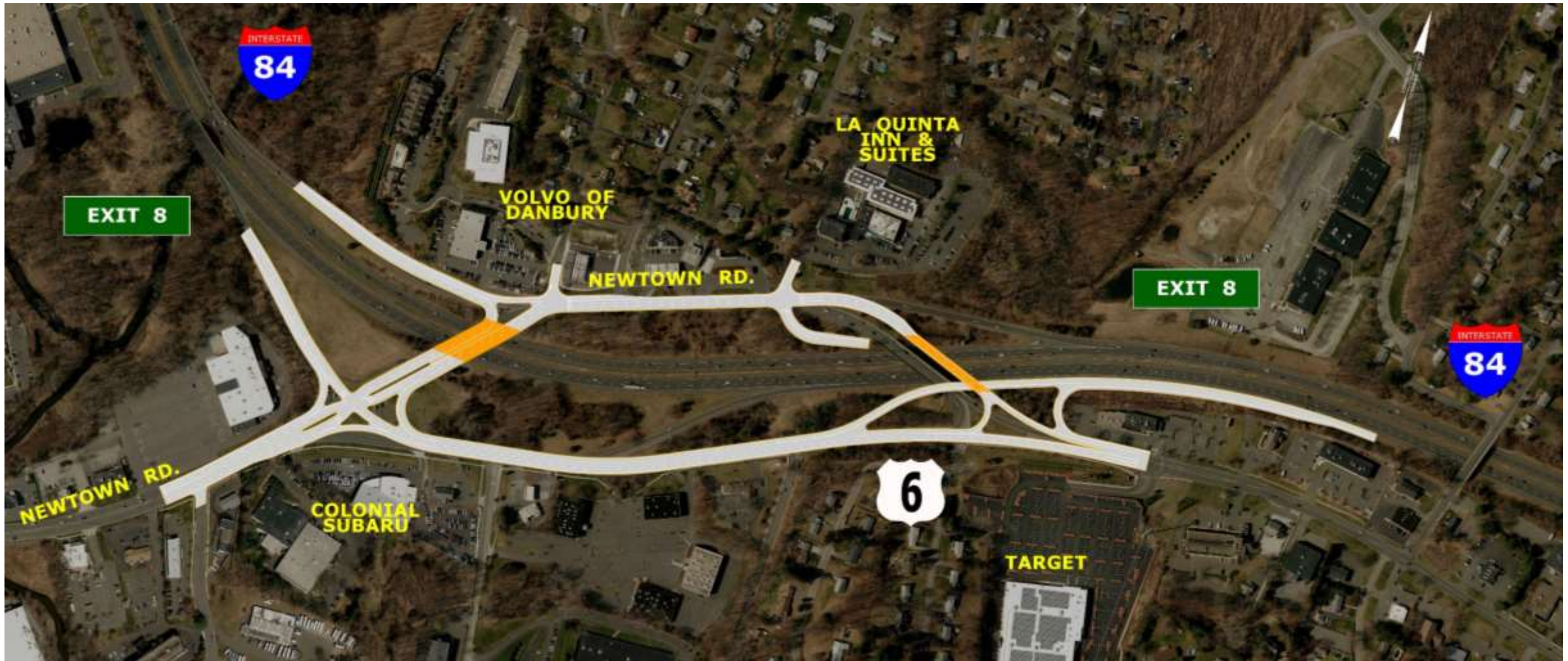
An aerial photograph of a multi-lane highway interchange, overlaid with a semi-transparent blue filter. The highway curves through a suburban residential area with many houses and trees. In the background, a city skyline is visible under a clear sky. The text 'Interchange 8 Improvements' is centered over the highway in a large, white, sans-serif font.

# Interchange 8 Improvements

# Interchange 8 Improvements



# Interchange 8 Improvements



# Diverging Diamond Interchange



An aerial photograph of a city, likely in the Northeastern United States, featuring a prominent multi-lane highway interchange. The image is overlaid with a semi-transparent blue filter. The word "Questions" is centered in a large, white, sans-serif font. The background shows a mix of residential houses, trees, and commercial buildings, with a large, modern building visible in the distance.

# Questions



# Next Steps

- Initiate early action / breakout projects
- Update project website
- Draft PEL Report
- Public Information Meeting





**Thank You!**