

I-84 Danbury Project

Project Advisory Committee (PAC) Meeting No. 12

December 14, 2022





Welcome to our 12th PAC Meeting!

CTDOT Team



Nilesh Patel
Principal Engineer



Kevin Burnham
Project Manager



Krishalyn Macrohon
Project Engineer

Consultant Team



Sharat K. Kalluri
Project Manager



Jeanine Armstrong Gouin
Environmental Documentation



Rick Black
Environmental Documentation



Marcy Miller
Community Engagement



Agenda

- PAC Update
- Discussion of the Combining of Previously-Screened Segment Concepts
- Screening of Concept Combinations
- Next Steps
- Discussion / Questions



PAC Update

Since Our Last Meeting

- Combined Concepts for Entire Corridor
- Added Concepts to Website
- Continued to Update Social Media
- Advertised the Public Information Meeting
- Documented the Decisions in a Draft PEL Report



www.i84danbury.com



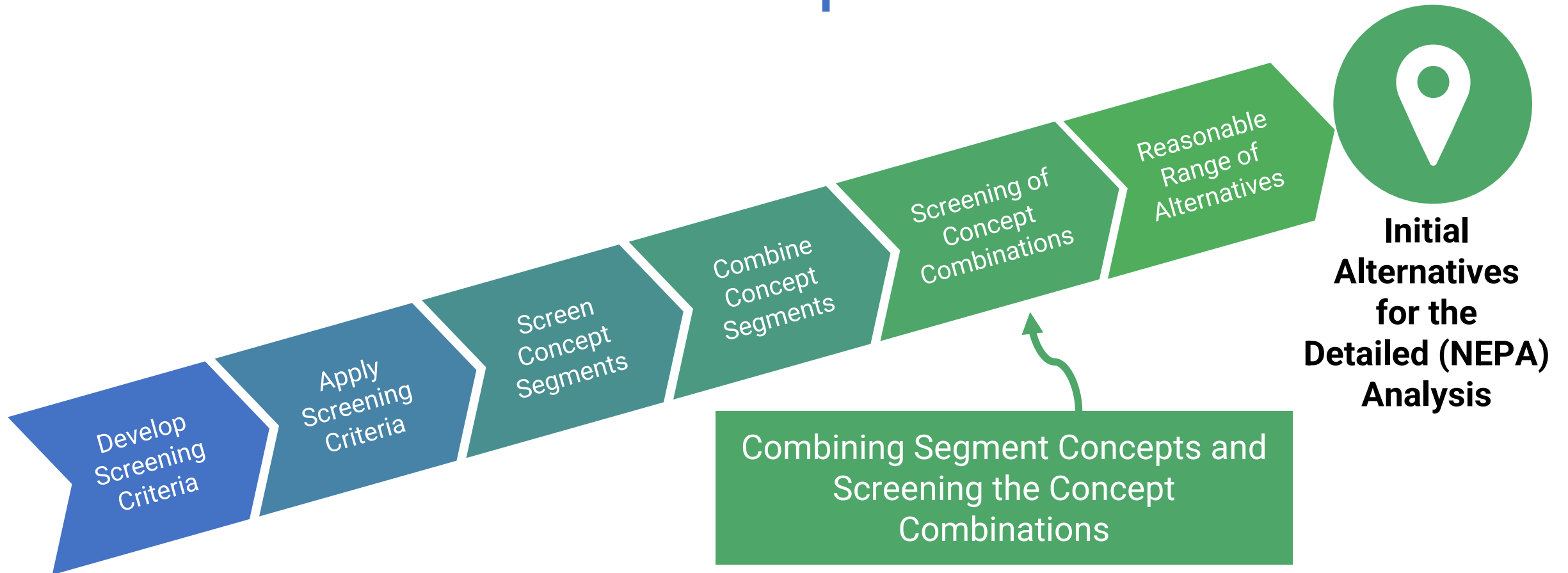
I-84 Danbury Project



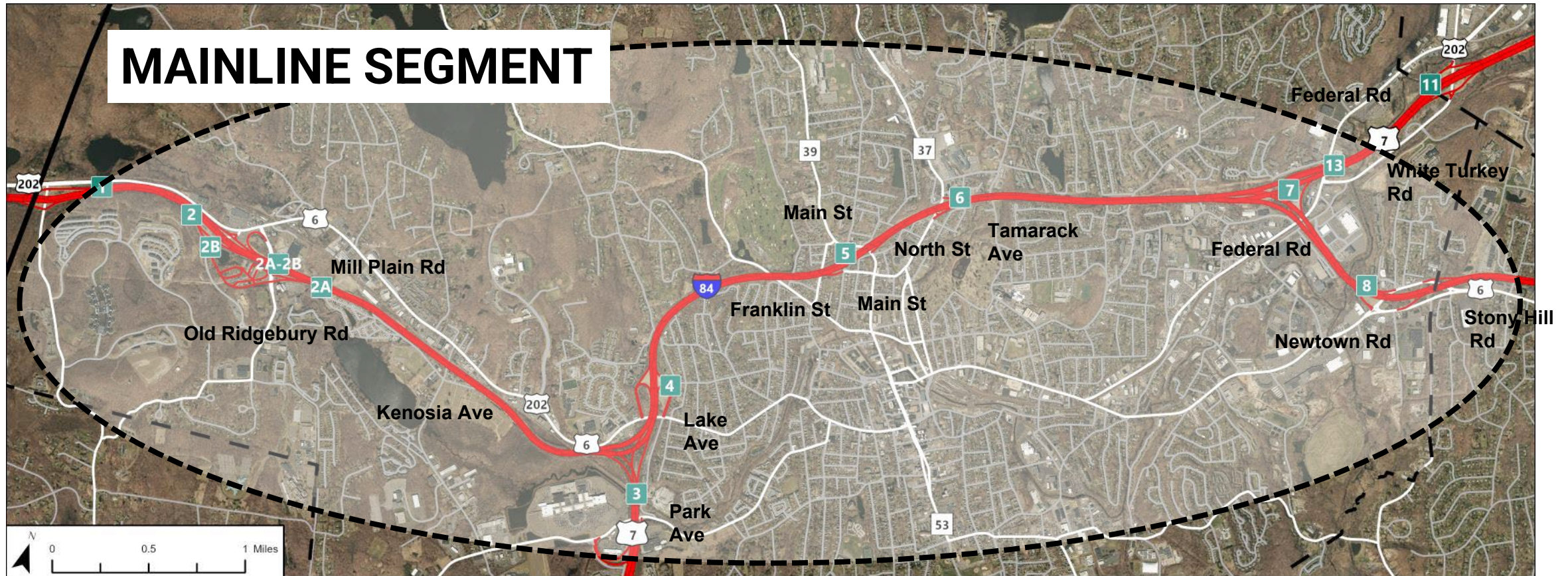
@i84danbury



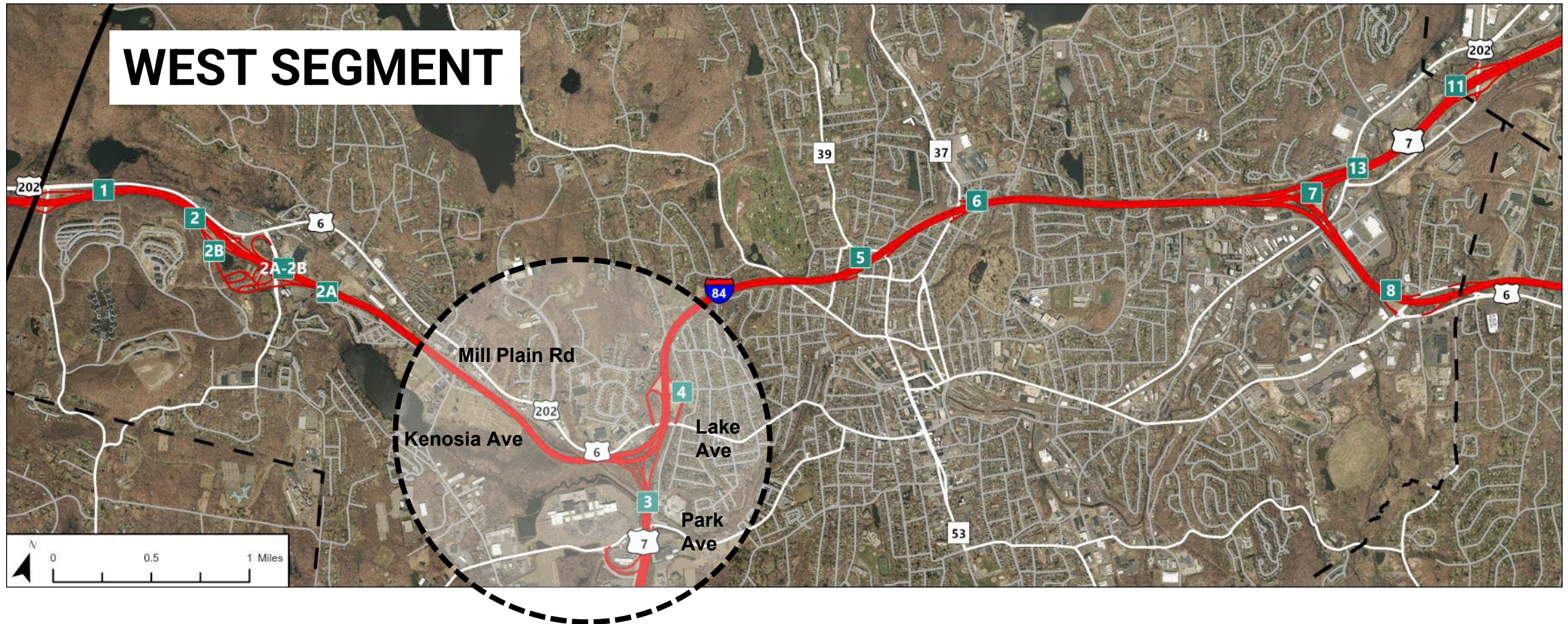
Next Steps



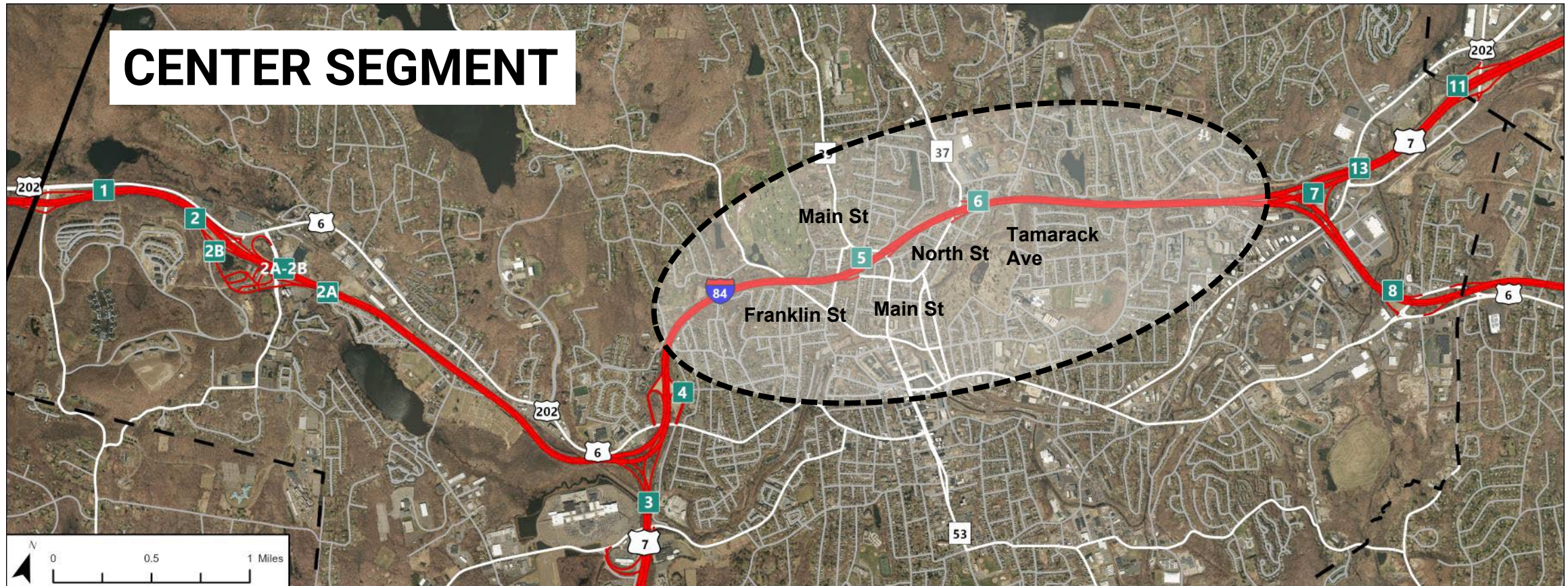
Reminder of Four Study Segments – Mainline Segment



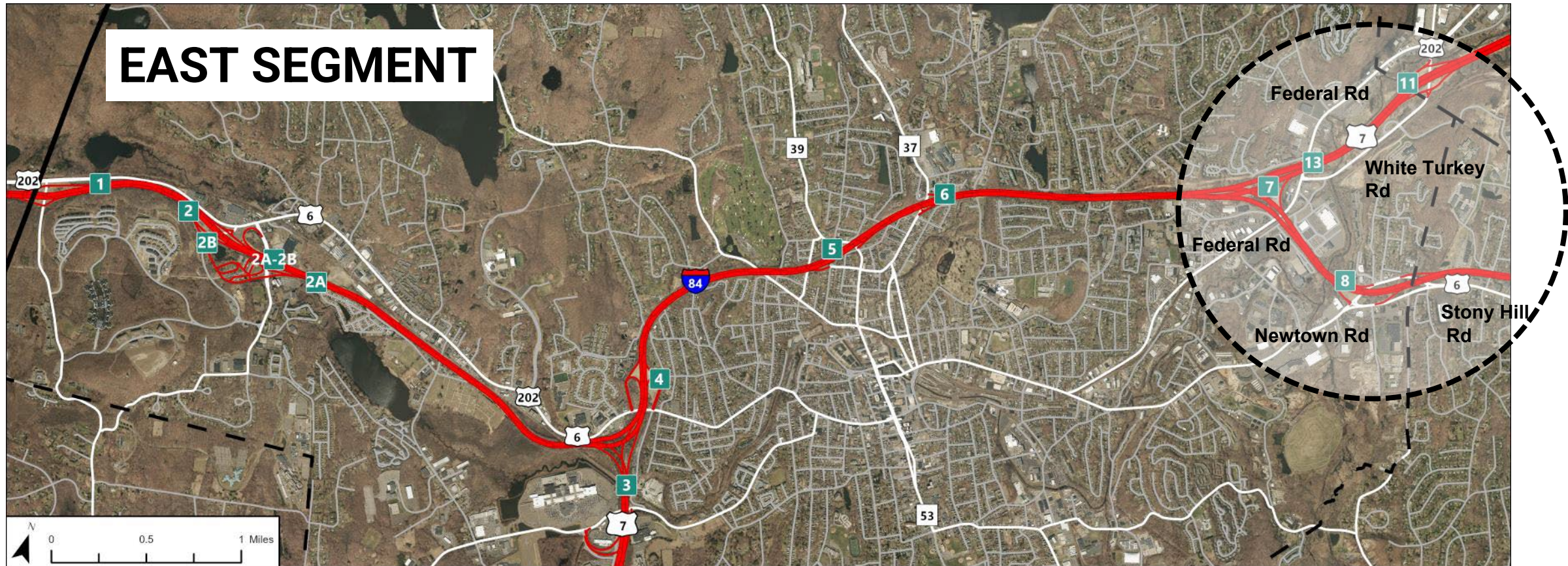
Reminder of Four Study Segments – West Segment

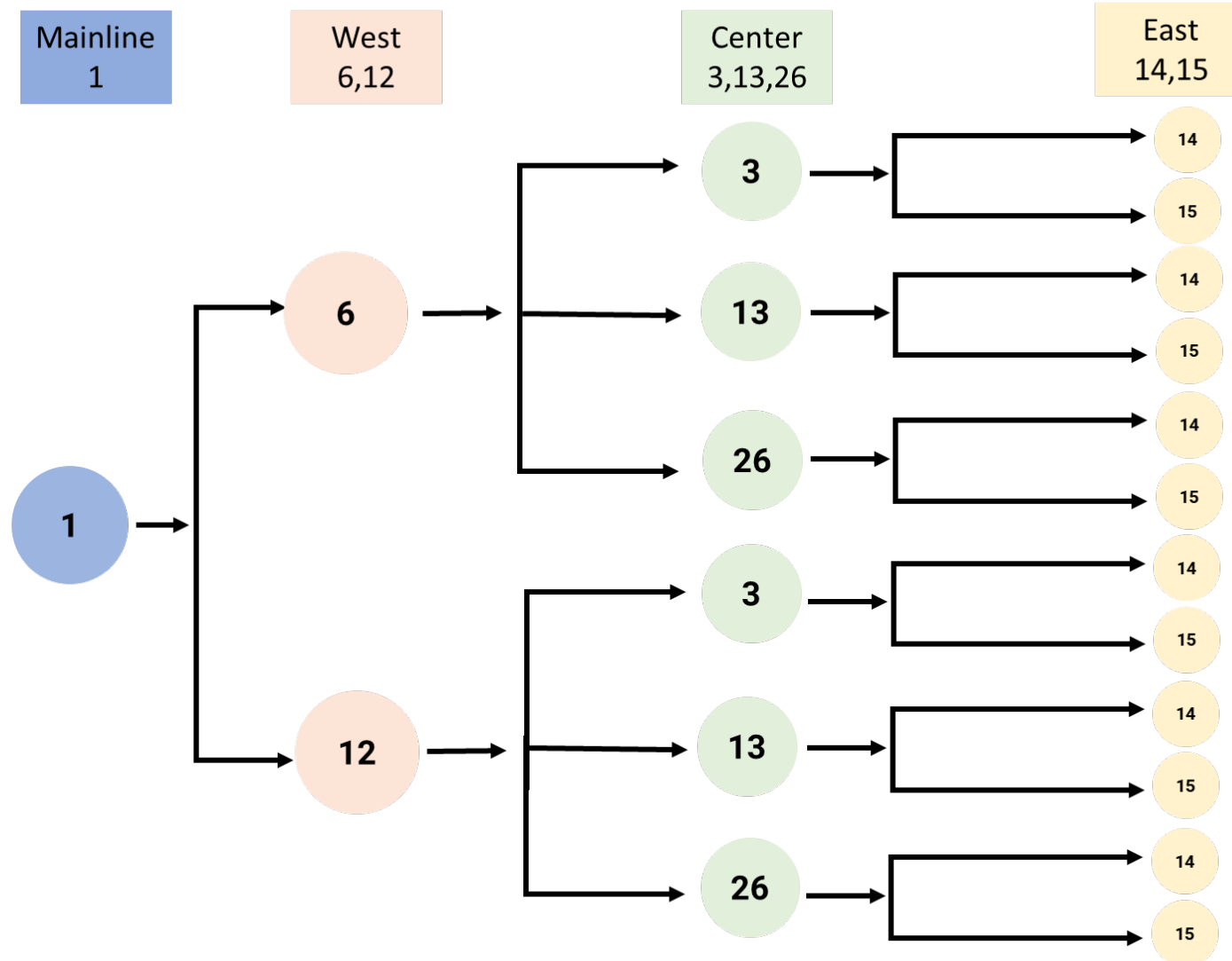


Reminder of Four Study Segments – Center Segment



Reminder of Four Study Segments – East Segment



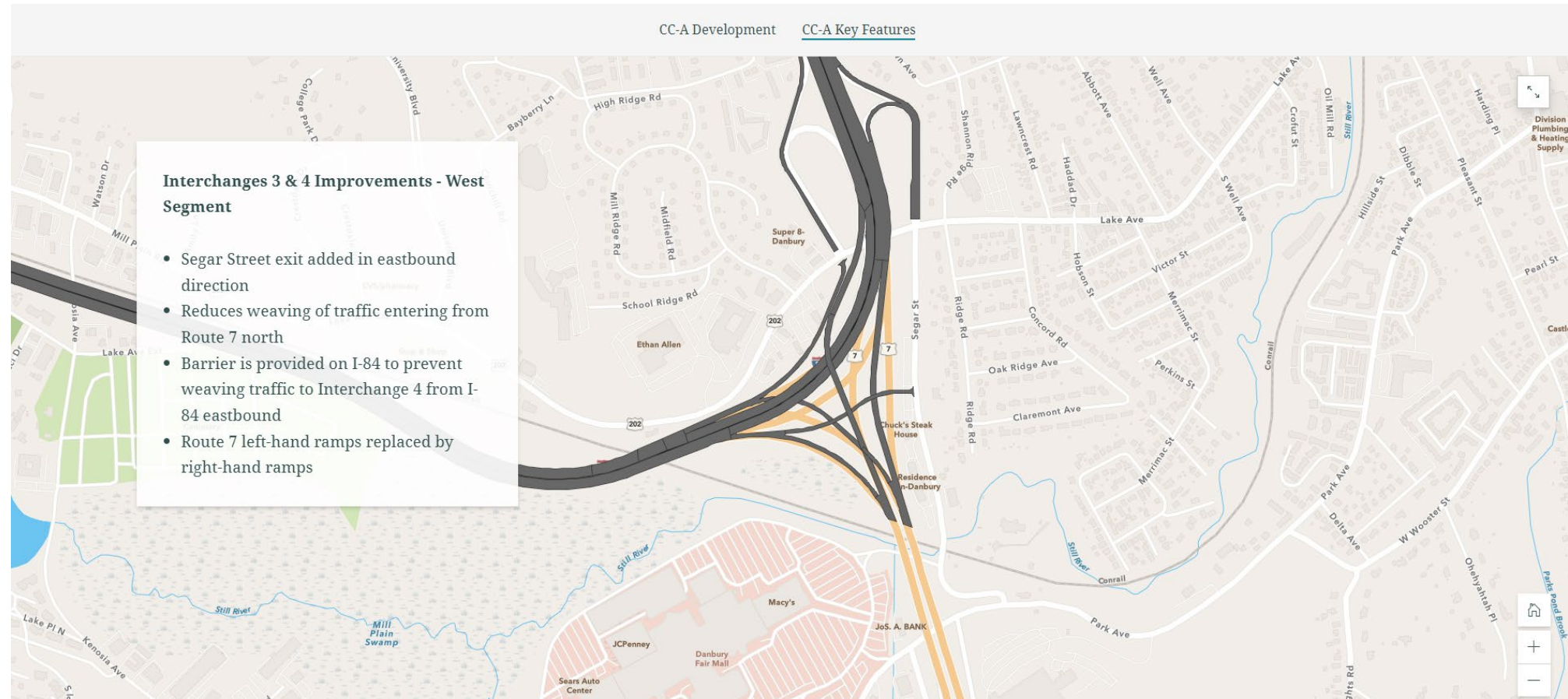


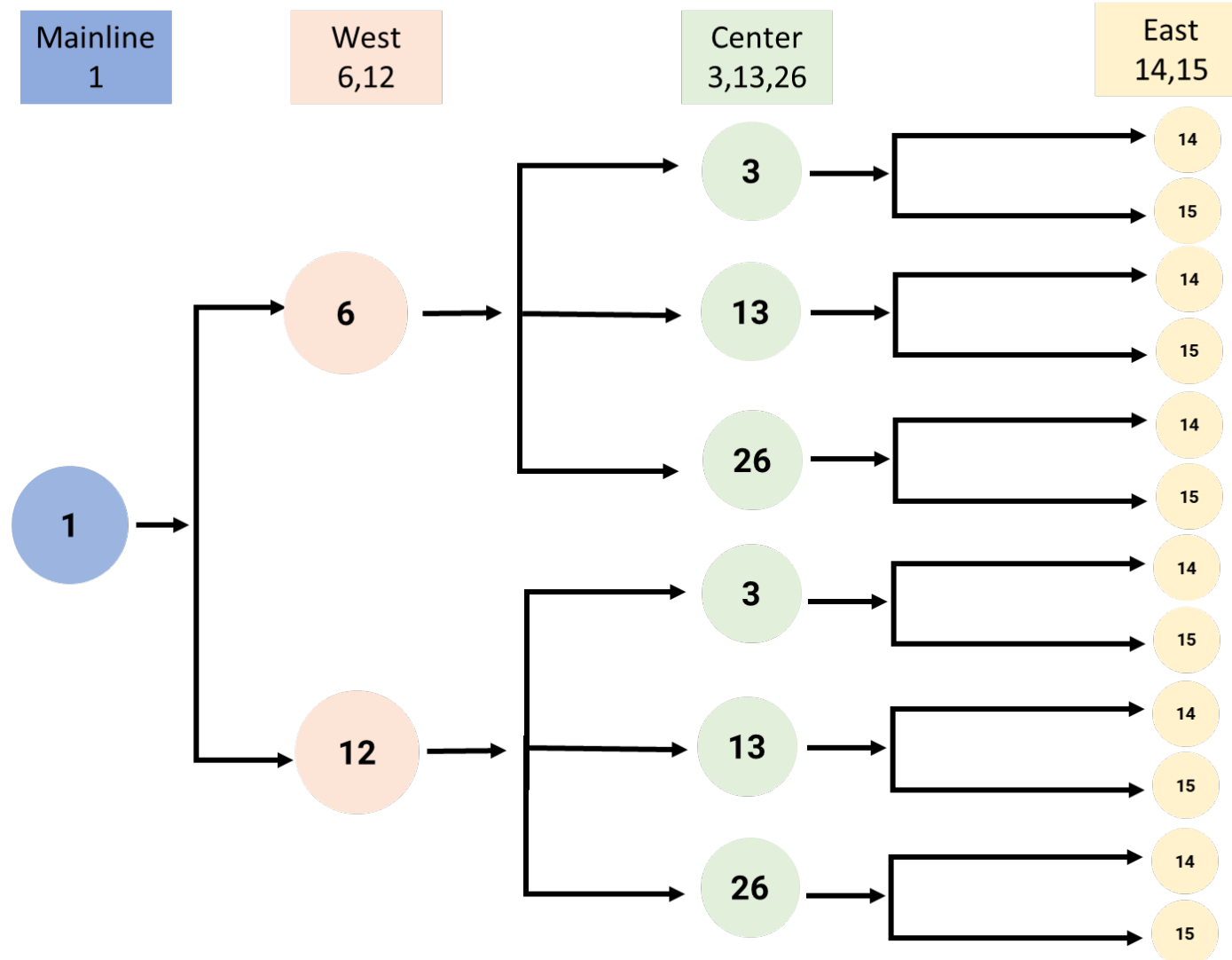
12 combinations are left to assess and compare against one another in:

Concept Combinations

- CC-A** (M1, W6, C3, E14)
- CC-B** (M1, W6, C3, E15)
- CC-C** (M1, W6, C13, E14)
- CC-D** (M1, W6, C13, E15)
- CC-E** (M1, W6, C26, E14)
- CC-F** (M1, W6, C26, E15)
- CC-G** (M1, W12, C3, E14)
- CC-H** (M1, W12, C3, E15)
- CC-I** (M1, W12, C13, E14)
- CC-J** (M1, W12, C13, E15)
- CC-K** (M1, W12, C26, E14)
- CC-L** (M1, W12, C26, E15)

Concept Combination Example Story Map





12 combinations are left to assess and compare against one another in:

Concept Combinations

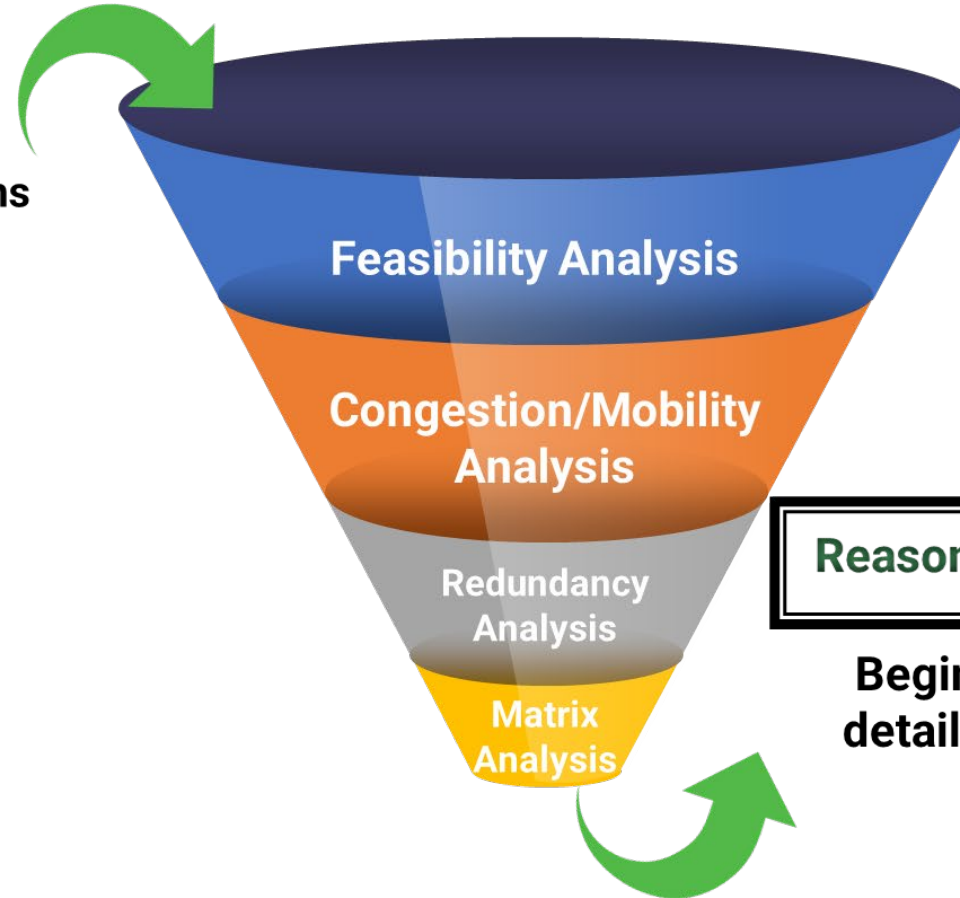
- CC-A** (M1, W6, C3, E14)
- CC-B** (M1, W6, C3, E15)
- CC-C** (M1, W6, C13, E14)
- CC-D** (M1, W6, C13, E15)
- CC-E** (M1, W6, C26, E14)
- CC-F** (M1, W6, C26, E15)
- CC-G** (M1, W12, C3, E14)
- CC-H** (M1, W12, C3, E15)
- CC-I** (M1, W12, C13, E14)
- CC-J** (M1, W12, C13, E15)
- CC-K** (M1, W12, C26, E14)
- CC-L** (M1, W12, C26, E15)



Screening of Concept Combinations

12 **Concept Combinations**
to be further screened.

- CC-A • CC-G
- CC-B • CC-H
- CC-C • CC-I
- CC-D • CC-J
- CC-E • CC-K
- CC-F • CC-L



Reasonable Range of Alternatives

**Beginning of Selection for the
detailed environmental (NEPA)
Analysis**



Overview



Engineering
Considerations



Environmental
Considerations



Overview



Engineering
Considerations



Environmental
Considerations



Engineering Considerations

Key Considerations

Congestion and Mobility

Peak hour reliability indices for Route 7 Southbound in A.M.

Peak hour reliability indices for Route 7 Northbound in P.M.

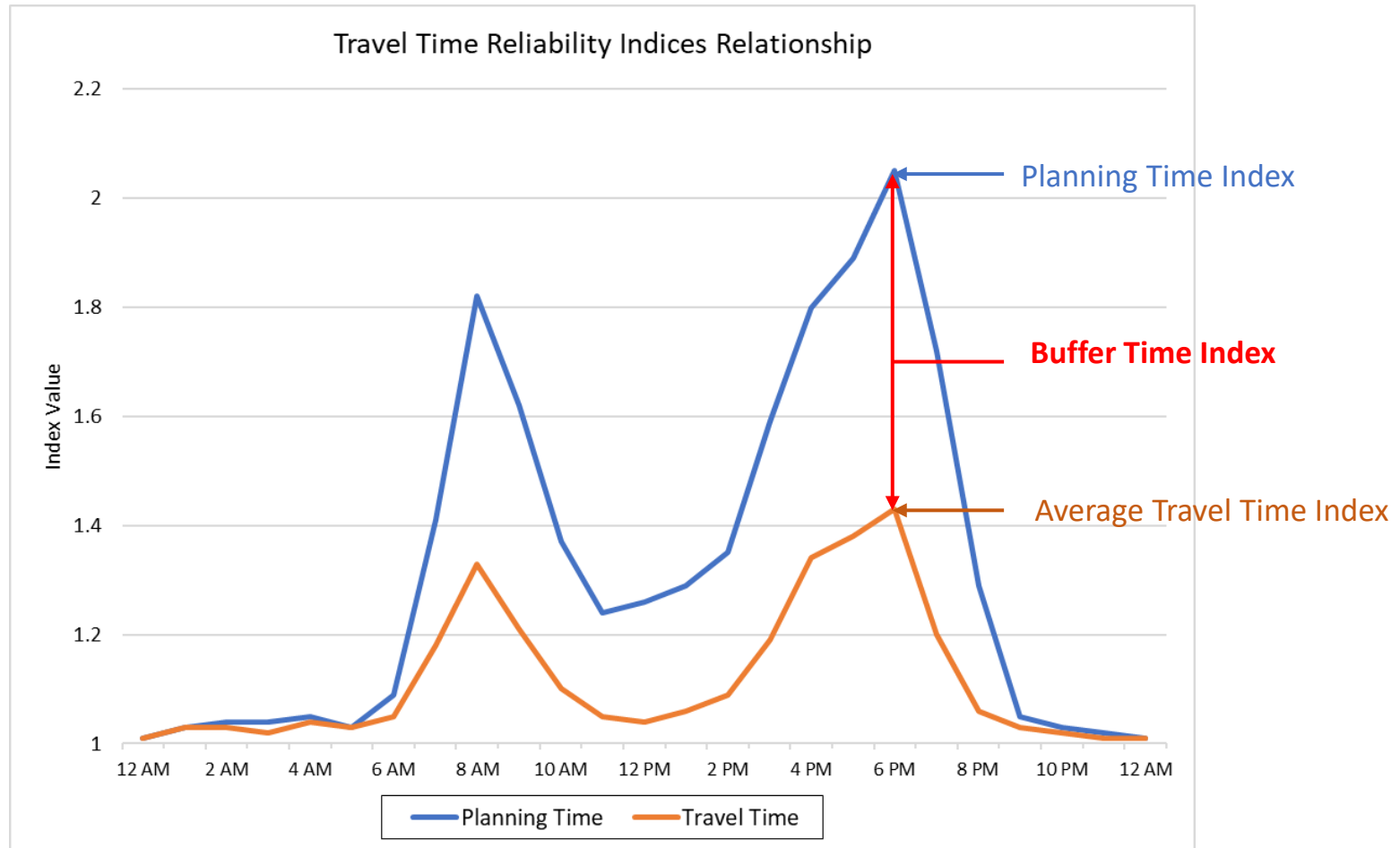
Peak hour reliability indices for I-84 Westbound in A.M.

Peak hour reliability indices for I-84 Eastbound in P.M.

Corrections of weaving



Engineering Considerations





Engineering Considerations

Additional Considerations

Maintains direct access to businesses on North Street

Distance between adjacent ramps

Meets driver expectation (full highway access)

Construction complexity and staging



Overview



Engineering
Considerations



Environmental
Considerations



Environmental Considerations

Natural Environment

Key Natural Environment Considerations

Potential wetland impacts

Potential stream impacts



Example: Wetland and Stream areas near I-84



Environmental Considerations

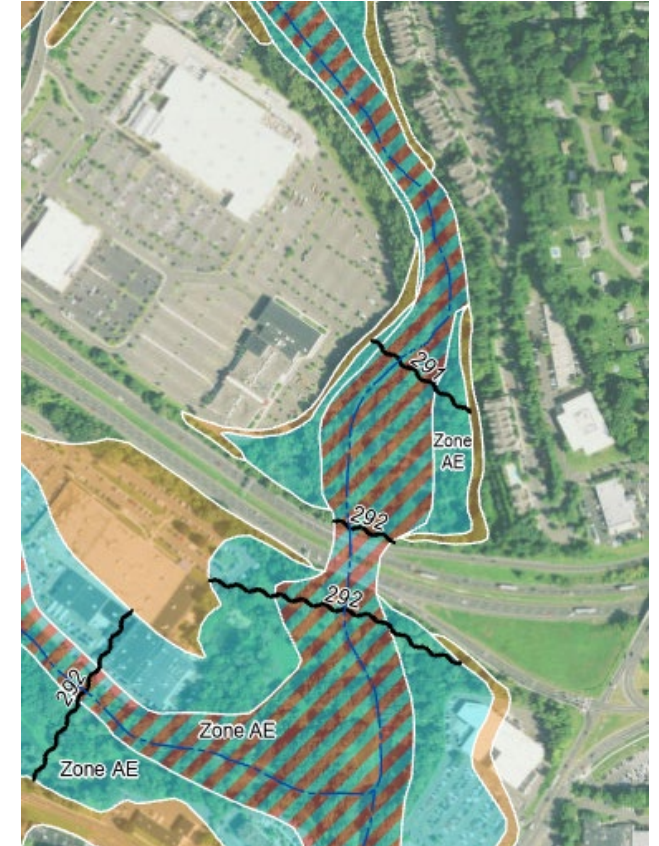
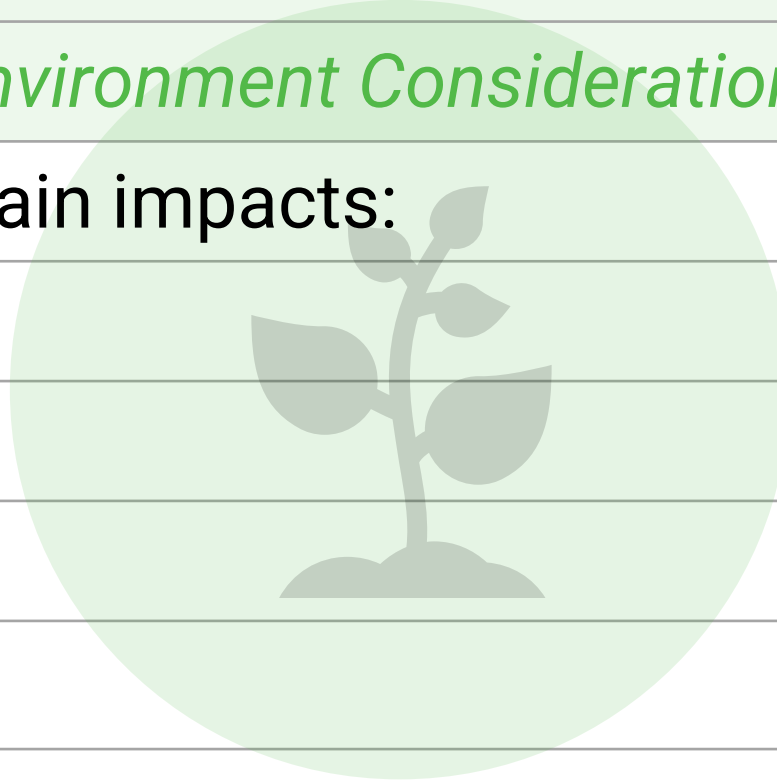
Natural Environment

Additional Natural Environment Considerations

Potential for floodplain impacts:

Flood Zone

Floodway



Example: FEMA Floodway surrounding I-84

Environmental Considerations

Built Environment

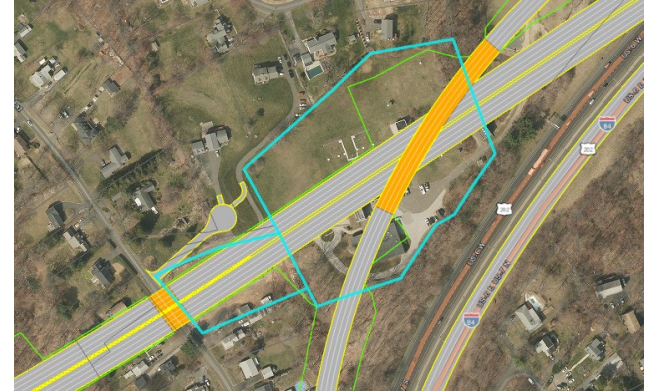
Key Built Considerations

Full property takes (numbers):

Residential, Commercial, and Other

Sensitive and EJ neighborhood impacts

Potential Section 4(f) property impacts



Example: Property Impacts



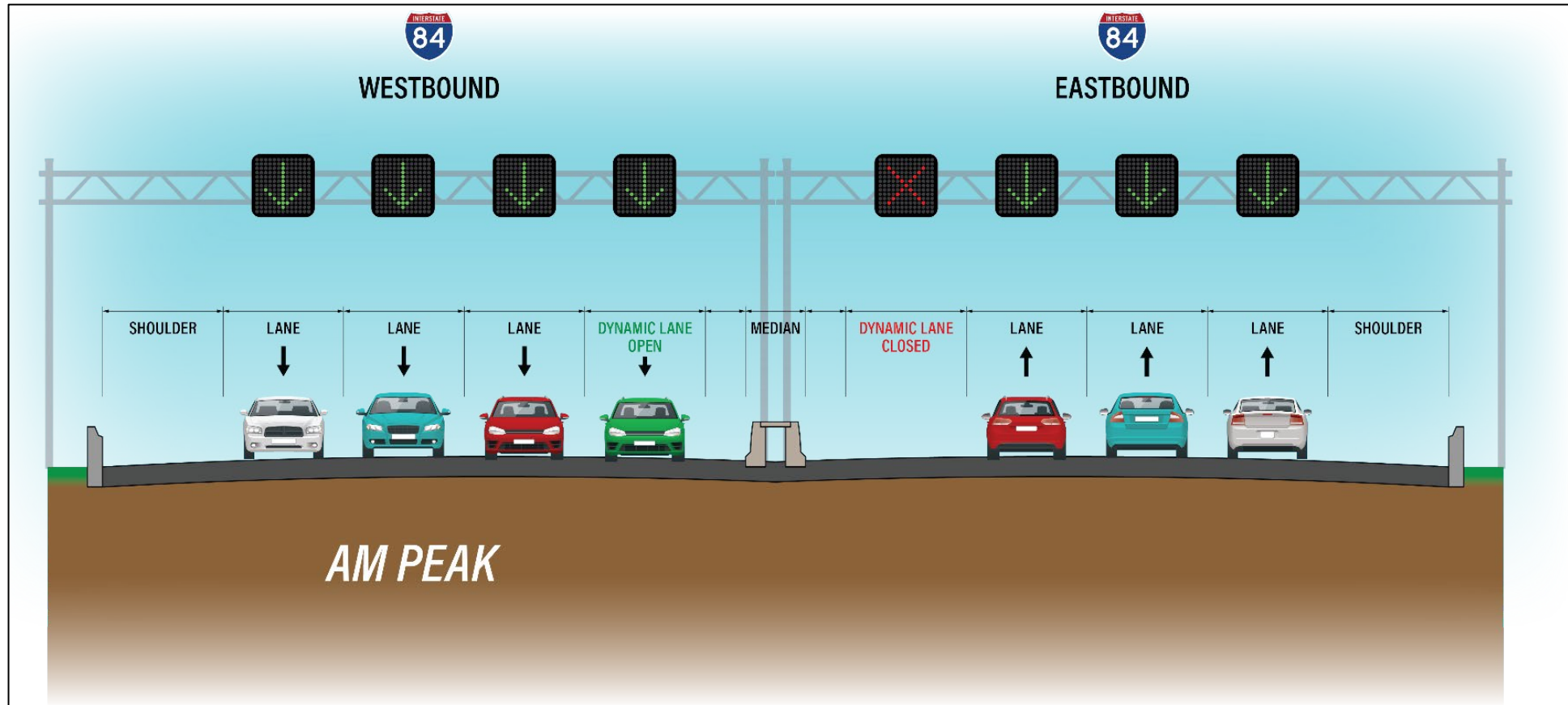
Example: Residential Land Use



Questions?

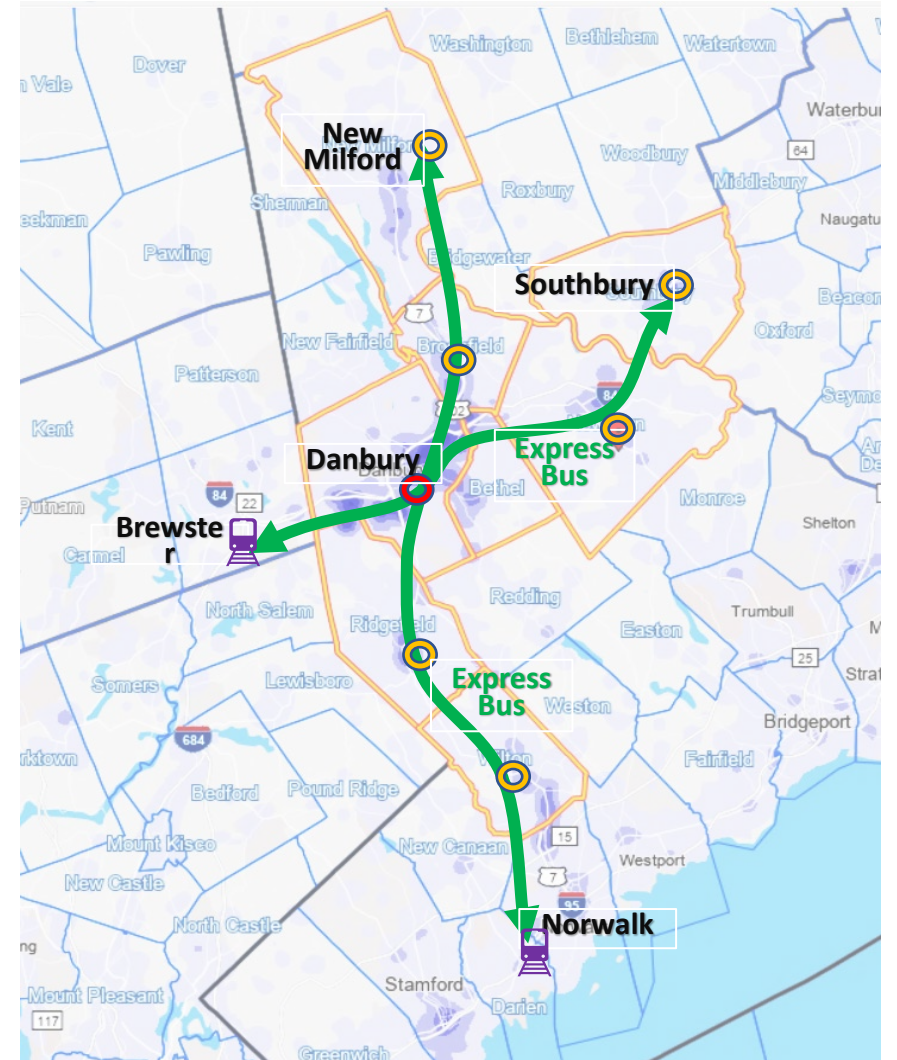


Dynamic Lane Use - Median



Potential Regional Transit Service

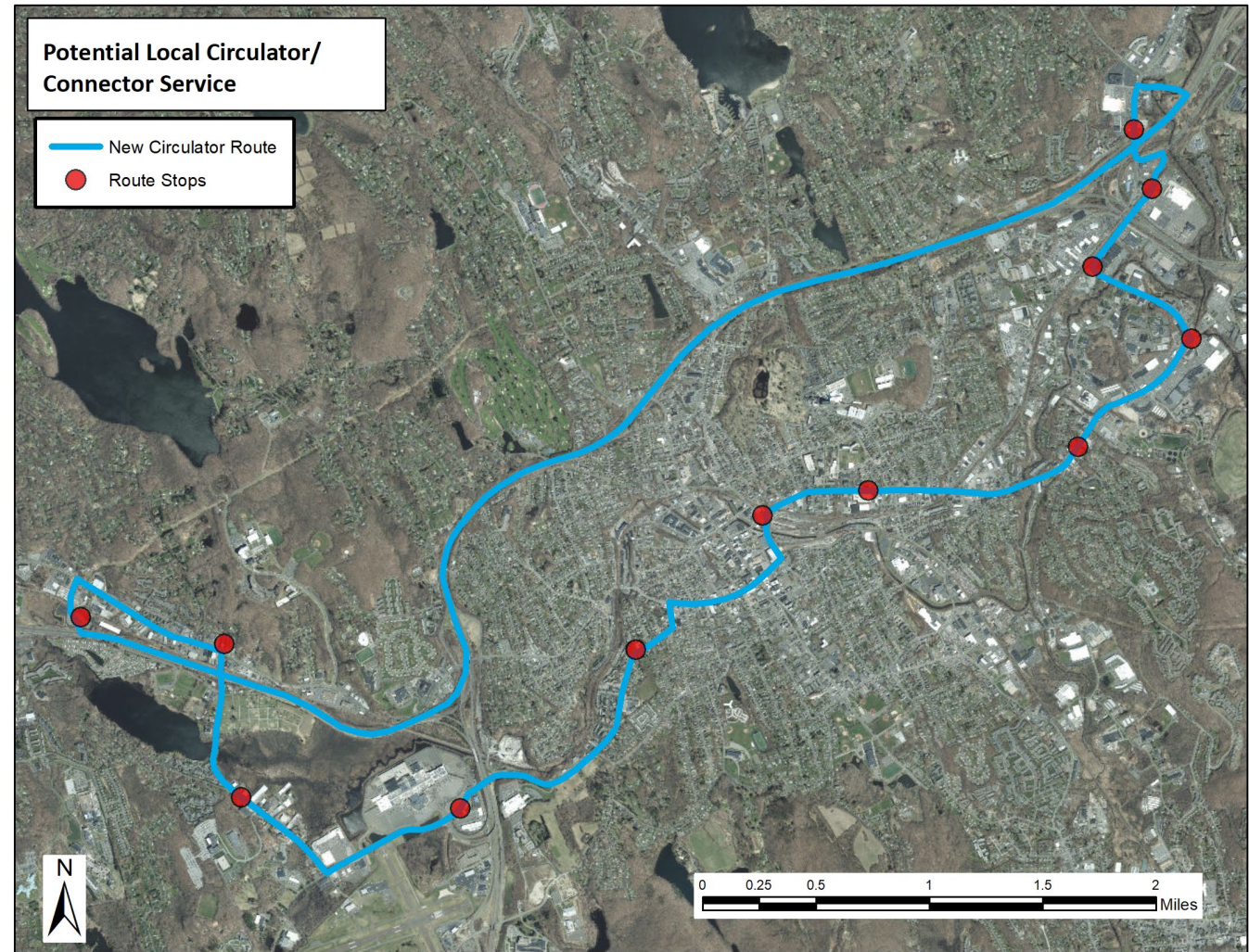
- New express bus routes could provide regional connectivity through Danbury
- Improved express bus routes could provide better regional access to commuter rail stations





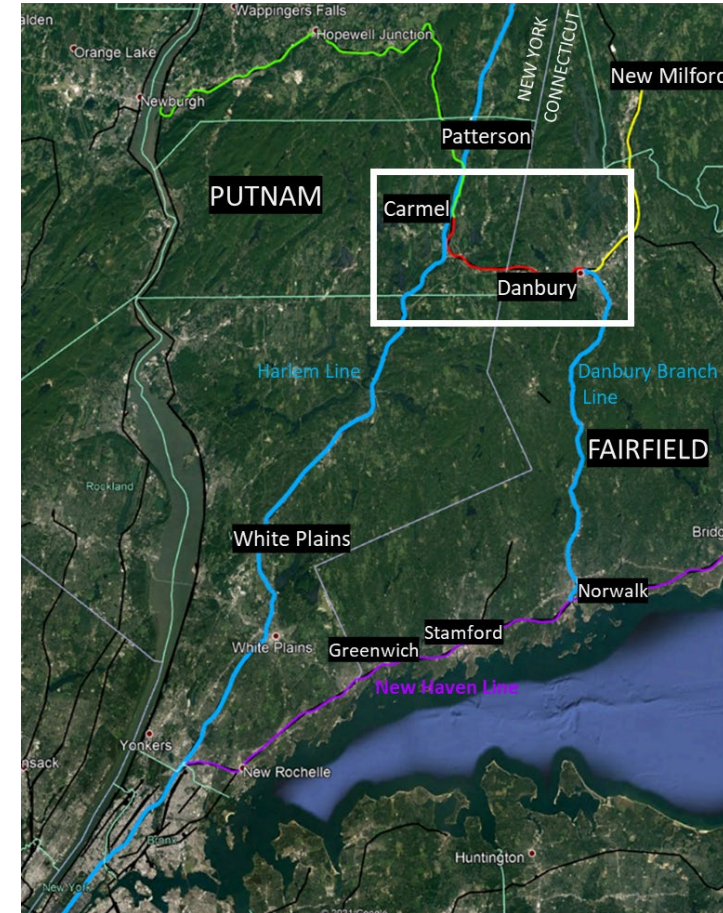
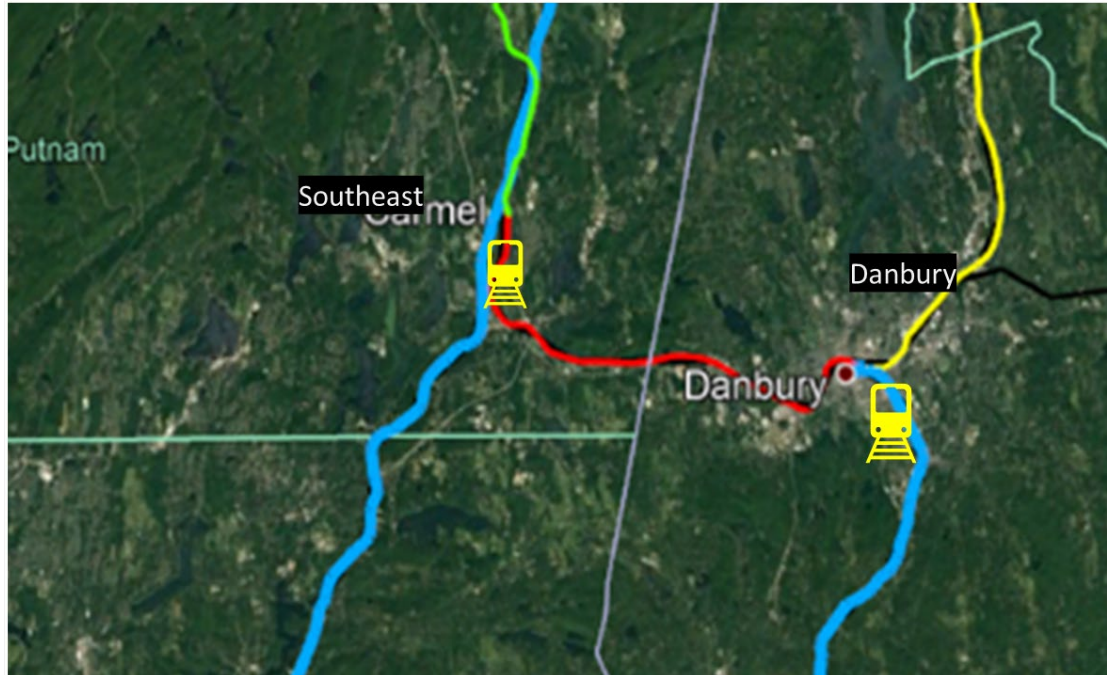
Potential Local Circulator/Connector Service

- New circulator route could enhance access to work and shopping destinations
- New circulator route could provide transfers between HART and the new express services

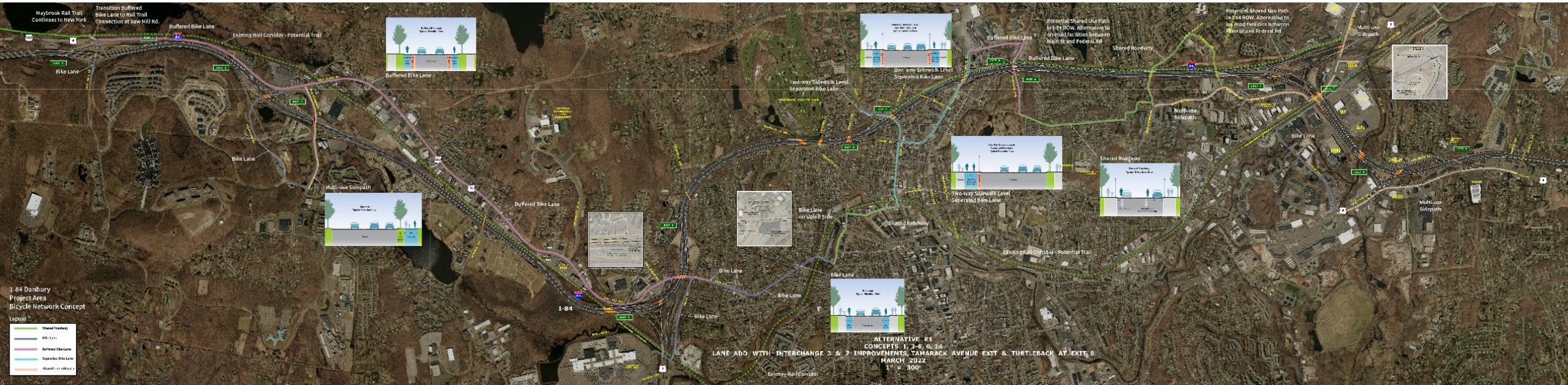




Planned Maybrook Line Rail Service



Potential Bicycle Plan



Additional Potential Early Action Projects

- Traffic Incident Management Improvements
- Arterial Traffic Management
- Corridor Traffic Management
- Intersection Improvement at Main Street and Downs Street
- Interchange 8 Improvements – U.S. Route 6/Newtown Road
- Travel Demand Management Opportunities

Next Steps

- Finalize Concept Combination Screening
- Develop a Range of Reasonable Alternatives to move Forward into the Environmental Study Phase
- PAC 13 in January/February 2023
- Document the Study in a PEL Report
- Public Information Meeting Spring/Summer 2023