



# I-84 Danbury Project



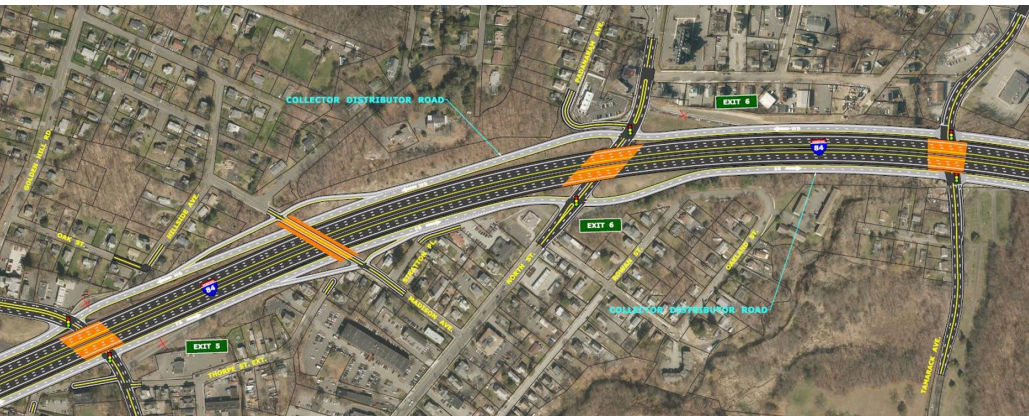
Fall 2020 Newsletter

[I84Danbury.com](http://I84Danbury.com)

[f](#) I-84 Danbury Project [t](#) @I84Danbury [i](#) @I84Danbury

VOL 1, ISSUE 3, FALL 2020

## Exploring Concept Development



A concept being studied by the Project team.

The [I-84 Danbury Project](#) is currently in the Concepts Study phase. During this phase, Project engineers, planners, and community stakeholders evaluate various concepts to improve the I-84 Danbury corridor and recommend a range of reasonable alternatives.

This past Spring, the I-84 Danbury Project team began developing concepts to address the needs and deficiencies within the I-84 Danbury corridor. These needs and deficiencies were determined from data collection as well as from input received from numerous stakeholder meetings, the Project Advisory Committee (PAC), and the public.

As part of this concept development

process, each concept is first measured against the overall Project purpose (i.e. Will it reduce congestion and improve mobility of people and goods in the I-84 corridor in the Greater Danbury area?)

If a concept does not address the Project purpose, it will not be considered as a potential solution for the I-84 Danbury Project.

As part of the assessment, the Project team evaluates how a concept performs against several elements:

- Traffic operations: Will a concept reduce congestion and improve mobility?
- Roadway geometry: Does a concept meet design standards?

- Constructability: Is the concept constructible?
- Local road connectivity: Will a concept improve access to local roads?
- Environmental resources: Will a concept affect an important environmental resource?
- Construction cost: What is the anticipated construction cost of a concept?

### Summary Report of Concepts Planned

A brief report will be prepared for each concept. It will summarize the pros and cons of each concept against each of the above elements. If a concept meets the Project purpose and addresses the elements stated above, it will continue to be evaluated in greater detail.

### Participating in the Process

Members of the PAC and public will play an important role throughout the concept development process. The PAC will be asked to share their ideas and concerns on the concepts throughout the development process.

The public will be given opportunities to provide their input via website updates, social media, and in-person and/or virtual meetings.

## What's Inside

2 Revamping the Project Website

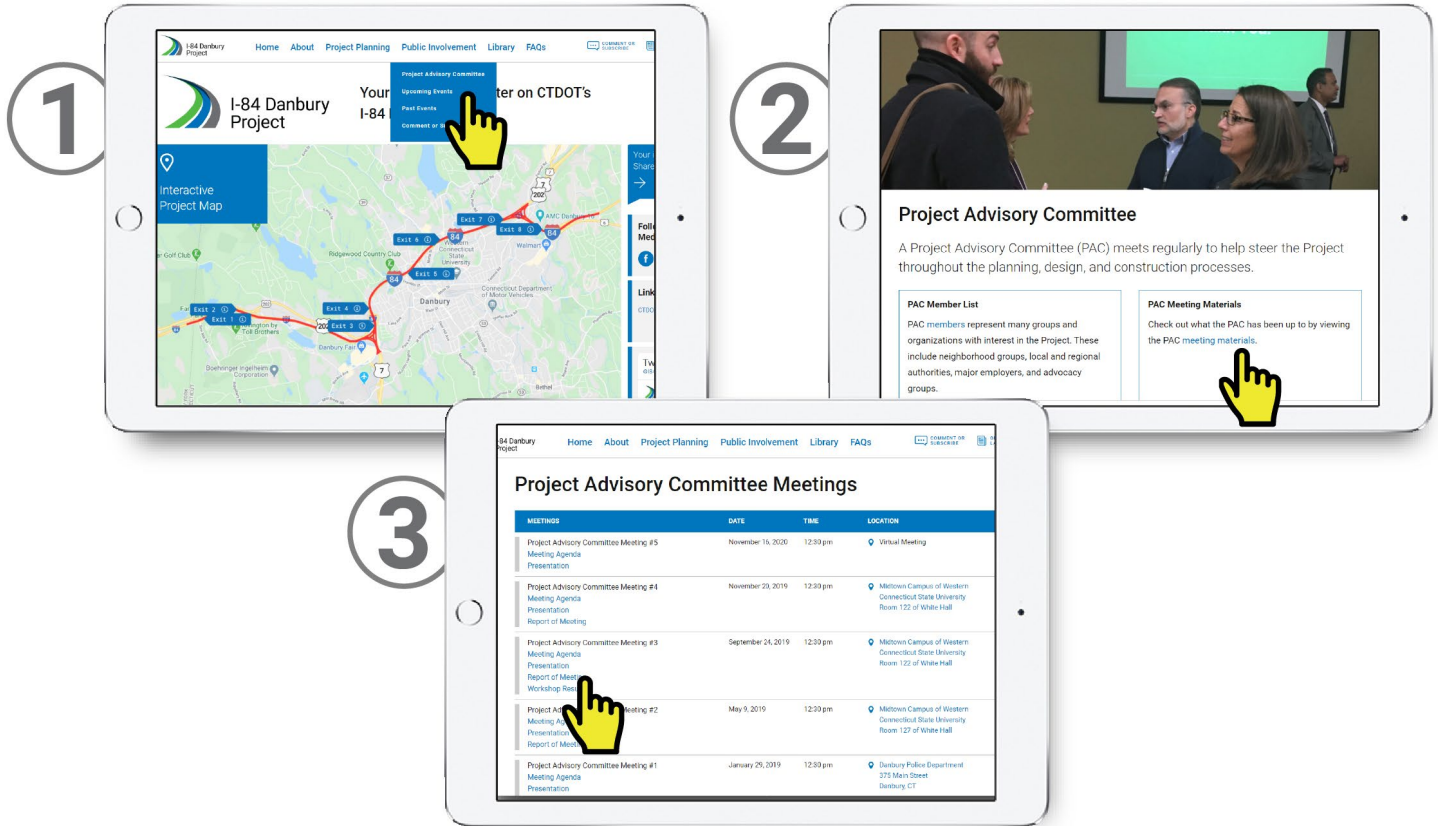
3 Local Spotlight: Matthew Cassavechia

4 We've Expanded Our Study Boundary!

4 Get Involved!



# Revamping the Project Website



[184Danbury.com](http://184Danbury.com) has been overhauled to make it simpler and easier to navigate!

One updated feature is the interactive Project map, where a website visitor can peruse the I-84 corridor and can get familiar with the Project location. The website visitor can also click on an icon at each exit and see a photograph of the exit.

One new feature worth checking out is the [Process and Timeline page](#), found in the “Project Planning” tab. The Process and Timeline page presents the phases of the study and is a “roadmap” towards Project completion for both a complex project and simpler “break-out” projects that could be implemented in

a shorter timeframe. The Process and Timeline replaces the Project Schedule graphic previously on the website.

In addition to several new website pages, the website navigation has been revised to make information simpler and easier to access. The goal is to have you, the website visitor, find information as easily and quickly as possible. This means fewer clicks (i.e. web pages to visit) before getting to your desired information. For example, we have consolidated features such as PAC materials onto just one page, public meeting materials onto another page, and general “library” materials, such as technical documents and newsletters,

The goal is to have you, the website visitor, find information as easily and quickly as possible.

onto another separate page.

We hope you notice the improvement! Please visit [184Danbury.com](http://184Danbury.com) today to view all these updates, provide feedback, and learn about all there is to come!



# Local Spotlight

Welcome to the Local Spotlight, profiles of noteworthy people, organizations, or places within the study area

## Matthew Cassavechia

Matthew Cassavechia has been a paramedic in the Danbury area for 30 years and has spent the last 20 as Director of Emergency Medical Services at Danbury Hospital and Danbury Emergency Medical Systems (EMS). He knows I-84 and the surrounding network of arterial and local roads like the back of his hand. Mr. Cassavechia has been a member of the I-84 Danbury Project Advisory Committee (PAC) since the group formed in early 2019.

The I-84 Danbury corridor “needs a really fresh look,” says Mr. Cassavechia. “Not only the interstate, but also the local arteries that cross town.” That’s because Danbury EMS is responsible for safely responding to calls for medical assistance and dispatching ambulances within the City of Danbury, as well as for transporting patients to and from Danbury Hospital and hospitals in the surrounding region. Reliable interstate and local road networks are critical to providing quality emergency medical services.

Mr. Cassavechia says shelter-in-place orders in response to the COVID-19 epidemic have amplified the importance of I-84 for transporting patients and supplies. While there has been a decline in the number of people calling to request emergency medical services, Mr. Cassavechia noted a significant increase in the movement of patients between hospitals in the region. Danbury EMS have transferred many individuals acutely ill with COVID-19 and other conditions to Danbury Hospital from outlying facilities. I-84 and Route 7 are



Matthew Cassavechia on the job.

vital connections for these trips.

Many years of experience have taught Mr. Cassavechia the importance of being prepared. Part of that is accounting for traffic and congestion on I-84. To do this, Danbury EMS employees stagger their shifts and are encouraged to report to work early when high traffic volumes or inclement weather are expected. As new municipalities and medical facilities have joined the service network, so has the number of staff. Today, Mr. Cassavechia’s diverse staff of paramedics and emergency medical technicians are representative of the many communities in the service coverage area, which includes areas to the north, south, and west (including New York communities).

### Hospital Access Critical to Response

Hospital access is one of the most important factors to emergency medical response. While Danbury Hospital can

be accessed relatively quickly and easily from some parts of the city and region, getting to the hospital from other parts

Mr. Cassavechia is glad to be part of what he describes as a “multi-faceted” group solving mobility challenges in the Danbury area.

can prove more challenging because of congestion and lack of direct roadway connections. For this reason, Danbury EMS keeps one ambulance dispatched on the west side of the City where the road network is less direct and because

CONTINUED ON PAGE 4





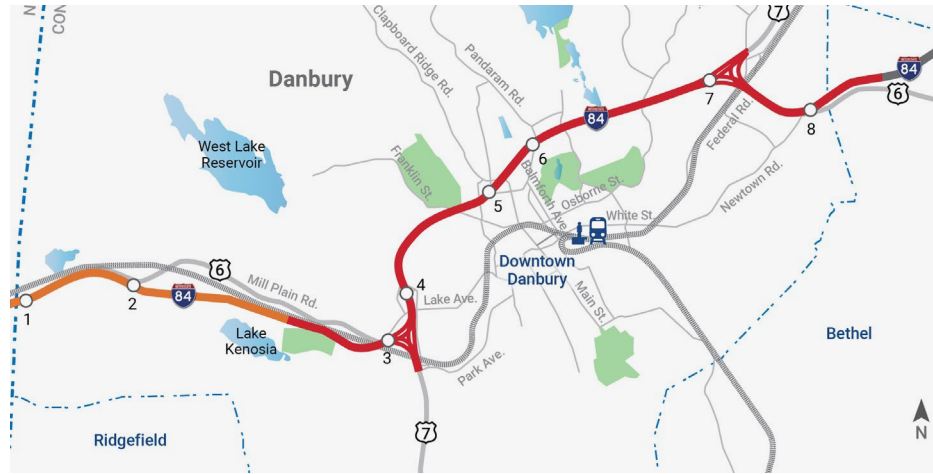
# We've Expanded Our Study Boundary!

Those familiar with the I-84 Danbury Project are aware that the original project limits were from Exit 3 on the west side of Danbury to Exit 8 on the east side of Danbury. After careful consideration, the Connecticut Department of Transportation (CTDOT) and Project team agreed that the study limits should be expanded westward to the New York state line. Here are some reasons for this decision.

The New York State Department of Transportation (NYSDOT) is currently conducting a planning study along the I-684 and I-84 corridors. NYSDOT is considering improvements to the I-684/I-84 interchange in Brewster, New York easterly to the Connecticut state line.

In addition, the Project Advisory Committee (PAC) and many stakeholders have requested the I-84 Danbury study extend further west to the New York state line. They noted that the west side of Danbury is experiencing increased development while Mill Plain Road (US Route 1/202), which parallels I-84 between Exits 1 and 3, is severely congested, especially during peak commuting hours.

CTDOT and the Project team are coordinating and working together with NYSDOT, their planning agencies, and stakehold-



The orange color highlights the section of I-84 that is now included in the study.

ers. CTDOT is working diligently to collect data and evaluate existing conditions on this 2-mile stretch of the expanded study corridor. These tasks will supplement the work already completed on the I-84 Danbury Study without delaying the overall process.





Expect to see some details on this new information in the coming months! The Project team will be sure to post information to [I84Danbury.com](http://I84Danbury.com).

## LOCAL SPOTLIGHT: MATTHEW CASSAVECHIA CONTINUED FROM PAGE 3

it takes longer to reach I-84 and Danbury Hospital when I-84 is congested. Still, Mr. Cassavechia believes hospital access could be improved for all users by reconsidering the location of on- and off-ramps in the I-84 corridor to better serve Tamarack Avenue.

Mr. Cassavechia is glad to be part of what he describes as a "multi-faceted" group solving mobility challenges in the Danbury area. While his unique perspective focuses on emergency medical services, he is optimistic that the I-84 Danbury Project will result in a "better quality of life for us all."

## Get Involved!

-  Attend a meeting
-  Like us on Facebook: [I-84 Danbury Project](https://www.facebook.com/I84DanburyProject)
-  Follow us on Twitter: [@I84Danbury](https://twitter.com/I84Danbury)
-  Follow us on Instagram: [@I84Danbury](https://www.instagram.com/I84Danbury)
-  Visit [I84Danbury.com](http://I84Danbury.com) and sign up for project updates