



Why Improve I-84 in Danbury?

Flip through these pages to learn more...

*Gire para la
versión en
español*

*Para versão
em português,
consulte a
recepção ou o
site do projeto*



www.i84danbury.com



I-84 Danbury Project

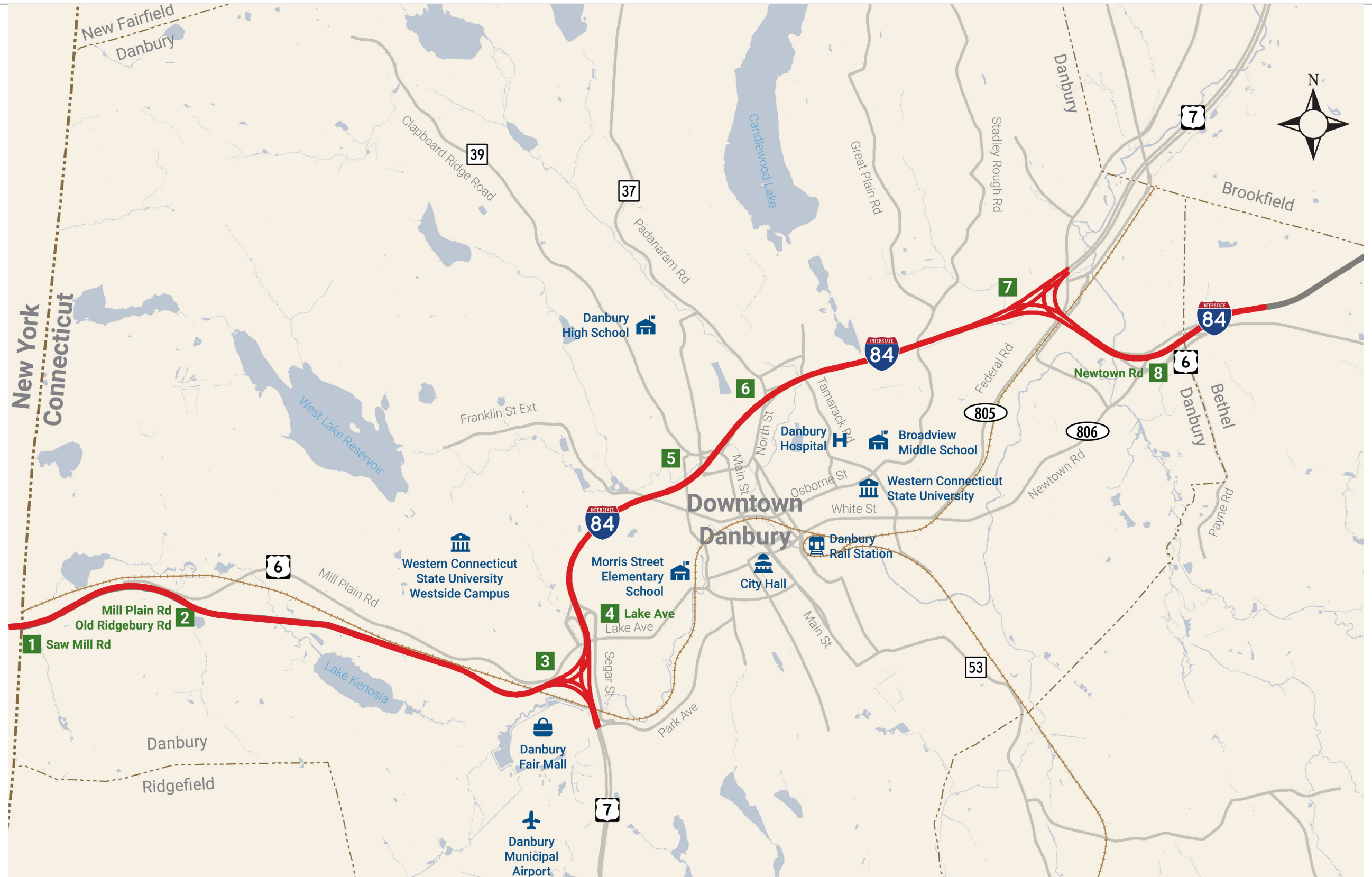


@i84Danbury



@i84Danbury

Project Area

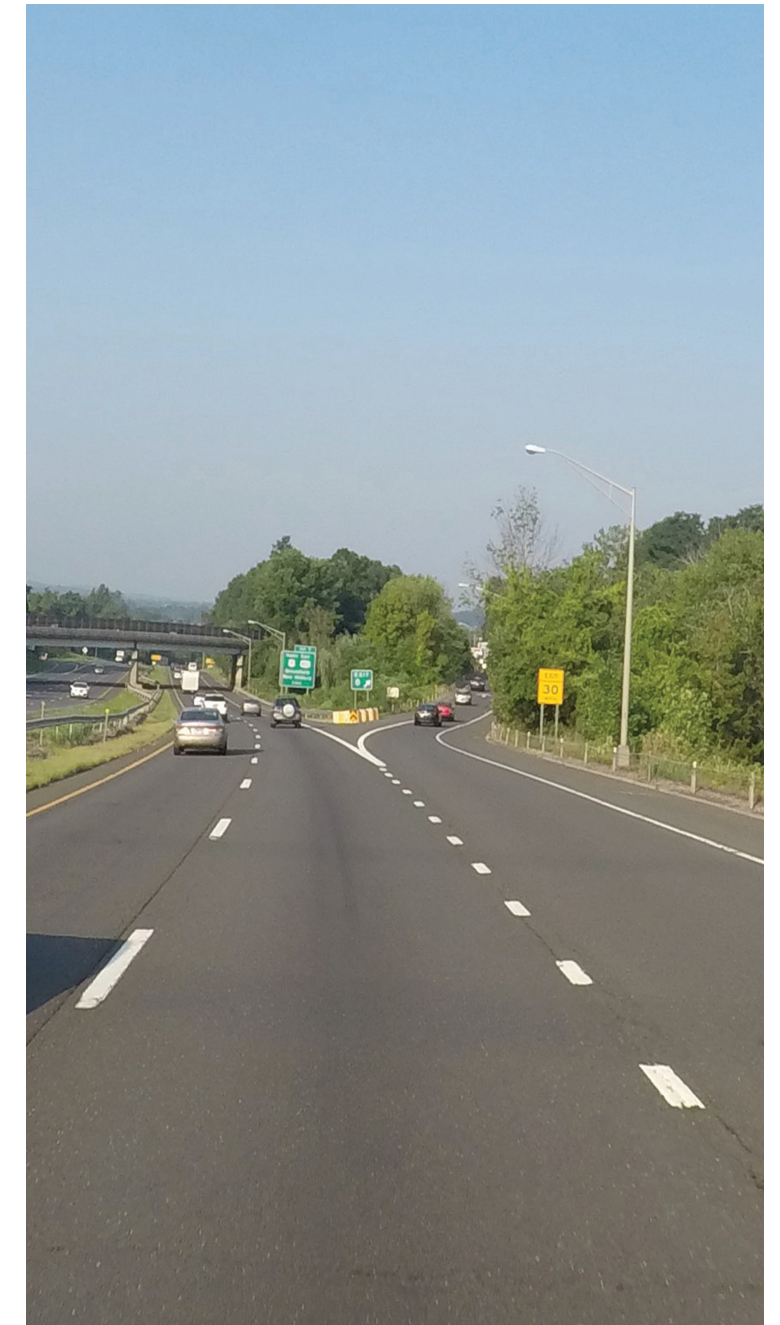


Why Improve I-84 in Danbury?

- Congestion
- About one crash a day
- Poor access to downtown and Danbury
- Hospital
- Aging infrastructure – built in 1960s



1961



2018

Traffic Congestion

- Today, I-84 carries approximately 20 times more traffic than in the 1960s
- I-84 is at capacity and traffic volumes continue to grow
- About one-third of motorists use I-84 for local trips instead of city streets
- I-84 is a major truck route to northeast cities



Safety

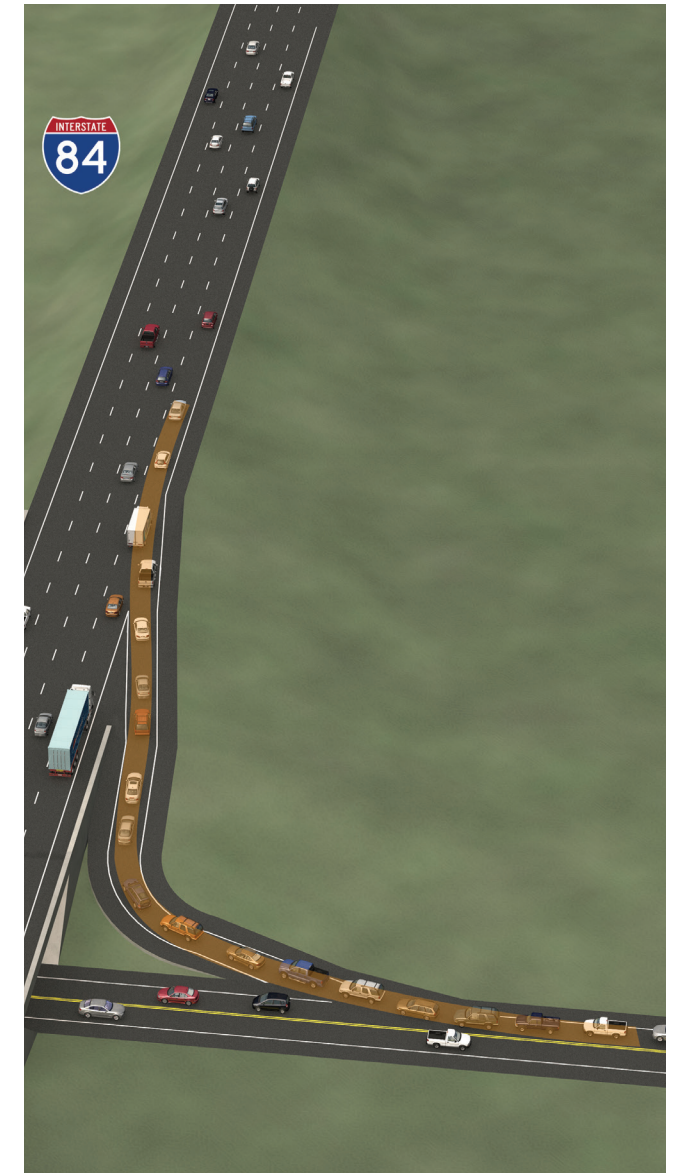
- There is approximately one crash every day on I-84 in Danbury
- What are some of the factors that cause crashes?
 - Congestion
 - Highway geometry and poor ramp layout



Ramps on the left mean traffic must cross lanes to exit



Closely spaced ramps create weaving movements



Short ramp lengths cause traffic backups

Community Survey

- **94%** say I-84 is critical to their travel needs
- **67%** say they use I-84 for local travel
- **88%** say congestion on I-84 causes frustration
- **4%** say they use city buses
- **87%** say they **do not** carpool and prefer to drive alone
- **84%** say they **do not** use commuter rail
- About **50%** say they would like to walk/bike if it was safe and convenient



Potential Benefits of Project



Safety



Transit



Local and Regional
Freight Mobility



Bicycle Travel



Pedestrian Travel



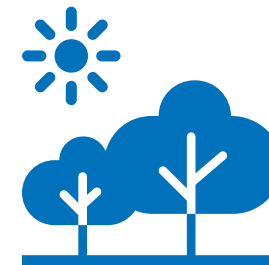
Access to
Danbury Hospital
and Downtown



Economic Growth



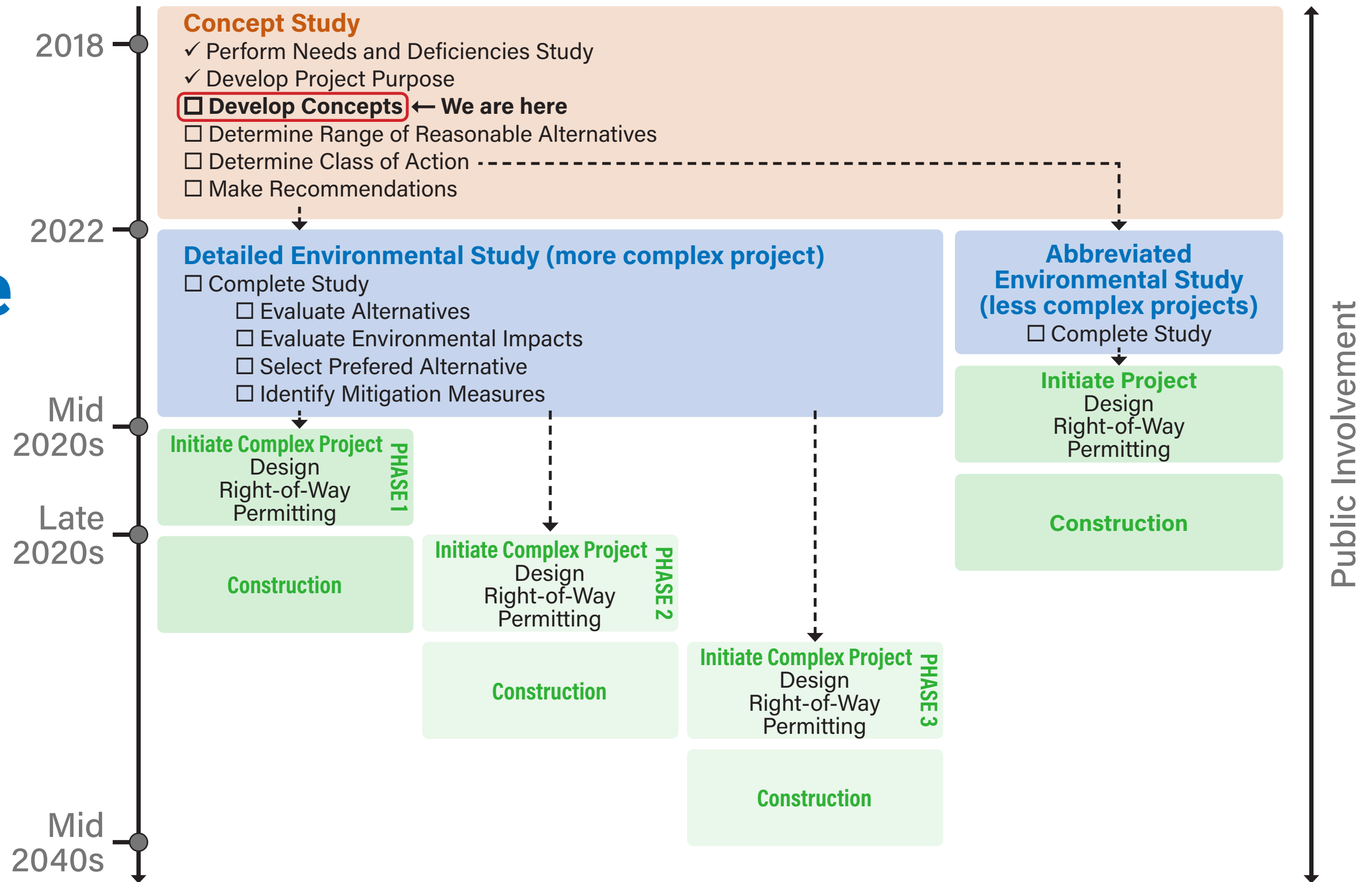
Construction
Jobs







Quality of the
Environment



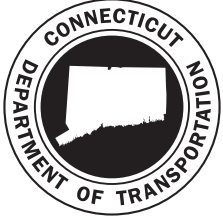
Process and Timeline



How to Get Involved

- What can you do today?
 - Attend a meeting or pop-up event
 - Visit  www.i84danbury.com for updates
 - Share your comments
 - Sign up for project newsletters
 - Check us out on  Facebook  Twitter and  Instagram
- Prepare for jobs now
 - Contact the Connecticut Department of Transportation's On-The-Job Training Program Coordinator at 860-594-2178 for information





CTDOT Project Contacts



Mike Calabrese, P.E.

Principal Engineer

860-594-2075

Michael.Calabrese@ct.gov

Andy Fesenmeyer, P.E.

Project Manager

860-594-3228

Andy.Fesenmeyer@ct.gov

Yolanda Antoniak, P.E.

Project Engineer

860-594-3197

Yolanda.Antoniak@ct.gov